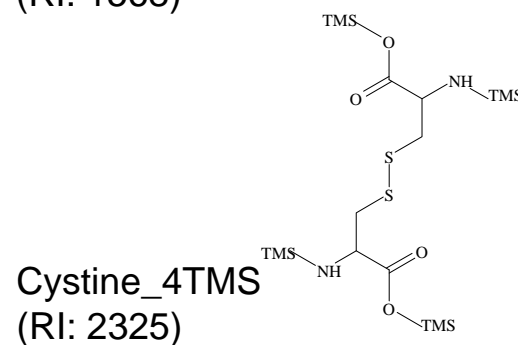
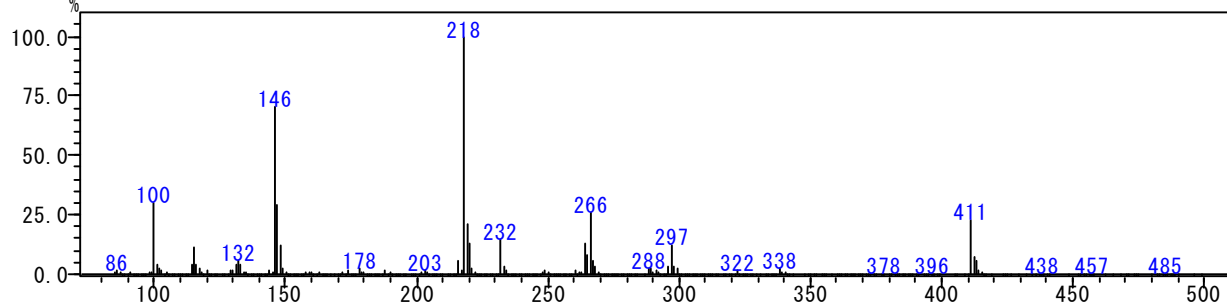
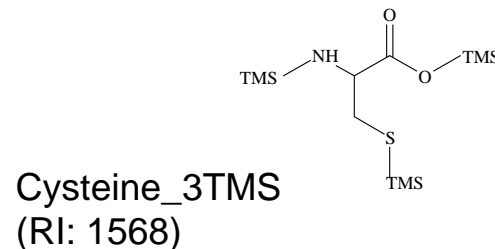
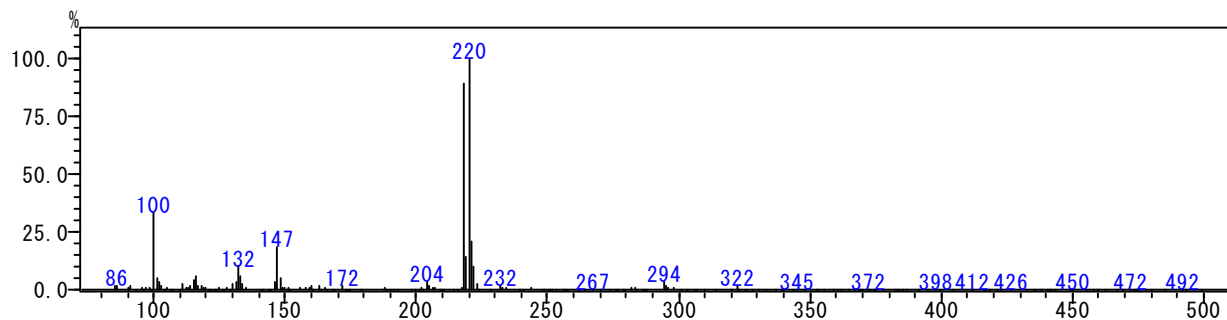
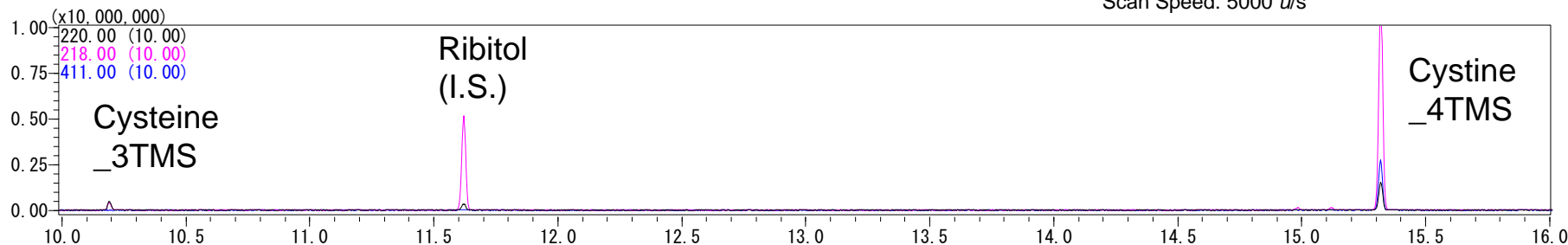


# Cysteine & Cystine (Oxim & TMS formation)

Cysteineを測定するとCysteineとCystineの両者を検出する。CysteineがS-Sで結合し、Cystineとなる。

Cysteineは中性もしくは弱い塩基性溶液では酸化され、Cystineになる。酸性溶液では安定(1)。

System: GCMS-QP2010Plus, AOC20i+s  
 Column: InertCap 5MS/NP 0.25mm x 30m, df=0.25μm  
 Column Temp.: 80°C(2 min) - 15°C/min - 330°C(9 min)  
 Inj.: 230°C, Split 25:1  
 Carrier Gas: He 39cm/s  
 Septum Purge: 5.0 mL/min  
 Inj. Vol.: 1 μL  
 Ion Source Temp.: 200°C  
 Interface Temp.: 250°C  
 Scan Range: m/z = 85 - 500  
 Scan Speed: 5000 u/s



(1) The MERCK INDEX THIRTEEN EDITION 2810

Structures are created using Chemistry 4-D Draw which is provided by ChemInnovation Software, Inc.

<http://www.gls.co.jp/technique/metabolomics/index.html>

