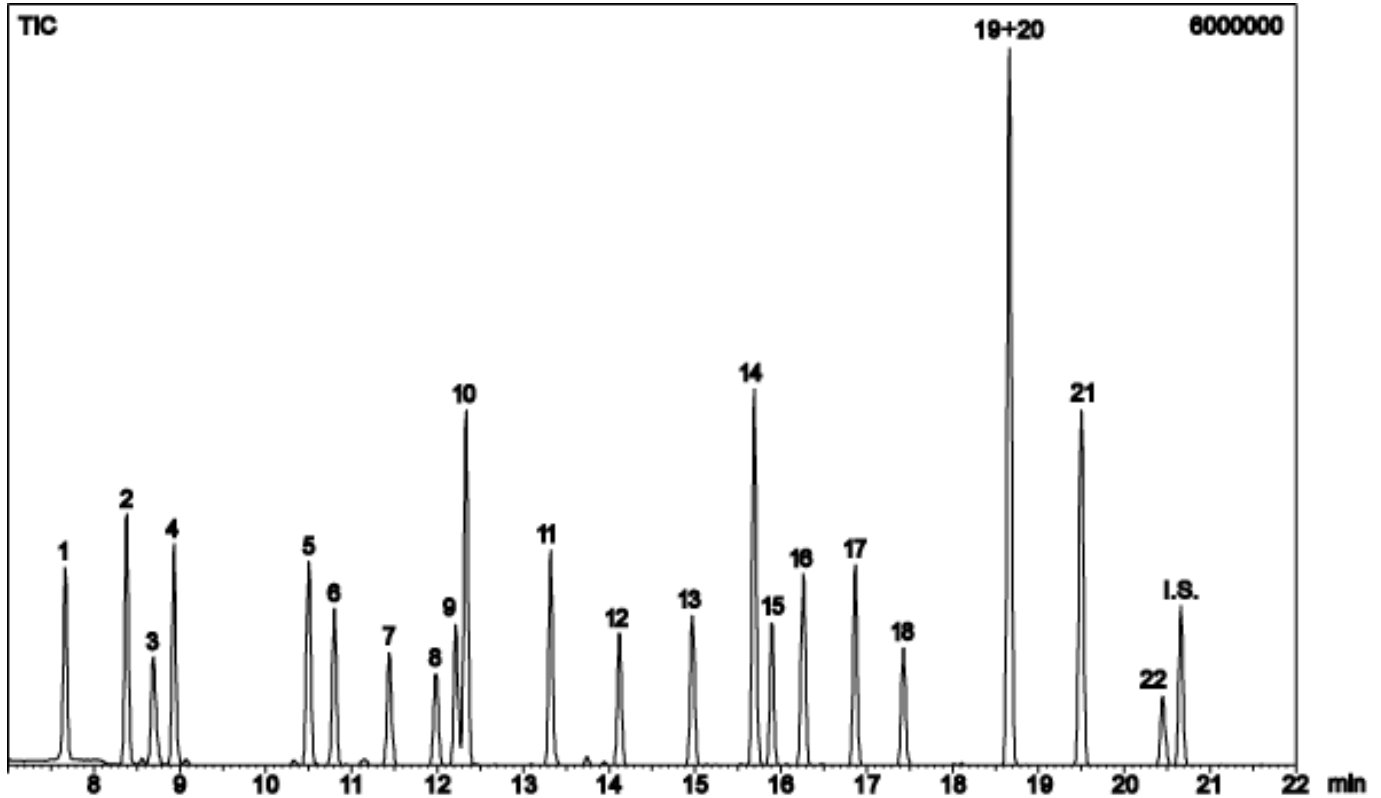


# InertSearch™ for GC

InertCap® Applications

## Volatile organic compounds in water(MTBE included) Data No. GA001-0000



System : GC/MS AQUA PT (P&T)  
Column : InertCap AQUATIC  
0.25mmI.D×60m df=1.0µm  
Column Temp. : 40°C (1min)→5°C/min→80°C→10°C/min→200°C  
Carrier Gas : He 100kPa  
Injection : P&T/Cryofocus  
Detection : MS  
Sample Temp. : 40°C  
Sample Size : 5mL

Solutes : 1. 1,1-Dichloroethene  
2. Dichloromethane  
3. MTBE  
4. trans-1,2-Dichloroethene  
5. cis-1,2-Dichloroethene  
6. Chloroform  
7. 1,1,1-Trichloroethane  
8. Tetrachloromethane  
9. 1,2-Dichloroethane  
10. Benzene  
11. Trichloroethene  
12. Bromodichloromethane  
13. cis -1,3-Dichloro-1-propene  
14. Toluene  
15. trans -1,3-Dichloro-1-propene  
16. 1,1,2-Trichloroethane  
17. Tetrachloroethene  
18. Dibromochloromethane  
19. m-Xylene  
20. p-Xylene  
21. o-Xylene  
22. Bromoform  
I.S. p-Bromofluorobenzene