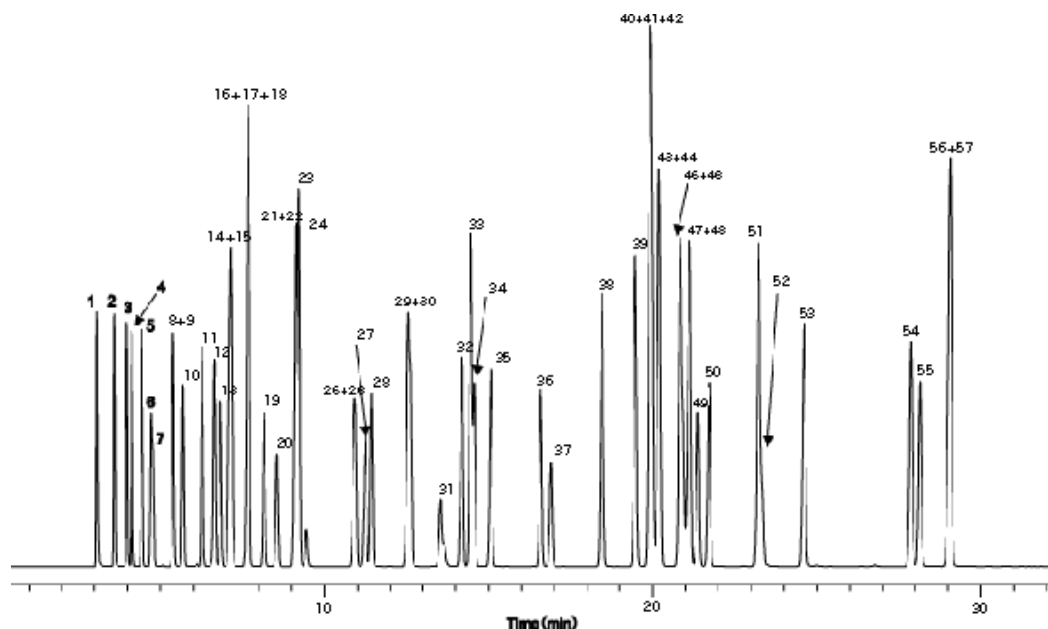


Organic solvents



System	: GC/FID	Solutes :	1. Methanol	31. N,N-Dimethylformamide
Column	: InertCap 1 0.53mmI.D. × 30m df=2.0µm		2. Ethanol	32. n-Amyl alcohol
Column Temp.	: 40°C(5min)→4°C/min→200°C(10min)		3. Acetone	33. Toluene
Carrier Gas	: He		4. i-Propanol	34. i-Butyl acetate
Injection	: 0.2µL 250°C		5. Ethyl ether	35. Methyl butyl ketone
Detection	: FID 250°C		6. Methyl acetate	36. n-Butyl acetate
Sample	: Organic solvents		7. Dichloromethane	37. Tetrachloroethylene
			8. n-Propanol	38. Chlorobenzene
			9. Carbon disulfide	39. Ethylbenzene
			10. 1,2-Dichloroethylene	40. m-Xylene
			11. Methyl ethyl ketone	41. p-Xylene
			12. 2-Butanol	42. i-Amyl acetate
			13. Ethyl acetate	43. Cyclohexanone
			14. Hexane	44. Cyclohexanol
			15. Chloroform	45. Styrene
			16. i-Butanol	46. Cellosolve acetate
			17. Methylcellosolve	47. o-Xylene
			18. Tetrahydrofuran	48. 1,1,2,2-Tetrachloroethane
			19. 1,2-Dichloroethane	49. Butylcellosolve
			20. 1,1,1-Trichloroethane	50. n-Amyl acetate
			21. i-Propyl acetate	51. Methylcyclohexanone
			22. n-Butanol	52. Methylcyclohexanol
			23. Benzene	53. Phenol
			24. Carbontetrachloride	54. o-Dichlorobenzene
			25. Trichloroethylene	55. o-Cresol
			26. 1,4-Dioxane	56. m-Cresol
			27. Ethylcellosolve	57. p-Cresol
			28. n-Propyl acetate	
			29. i-Amyl alcohol	
			30. Methyl i-butyl ketone	