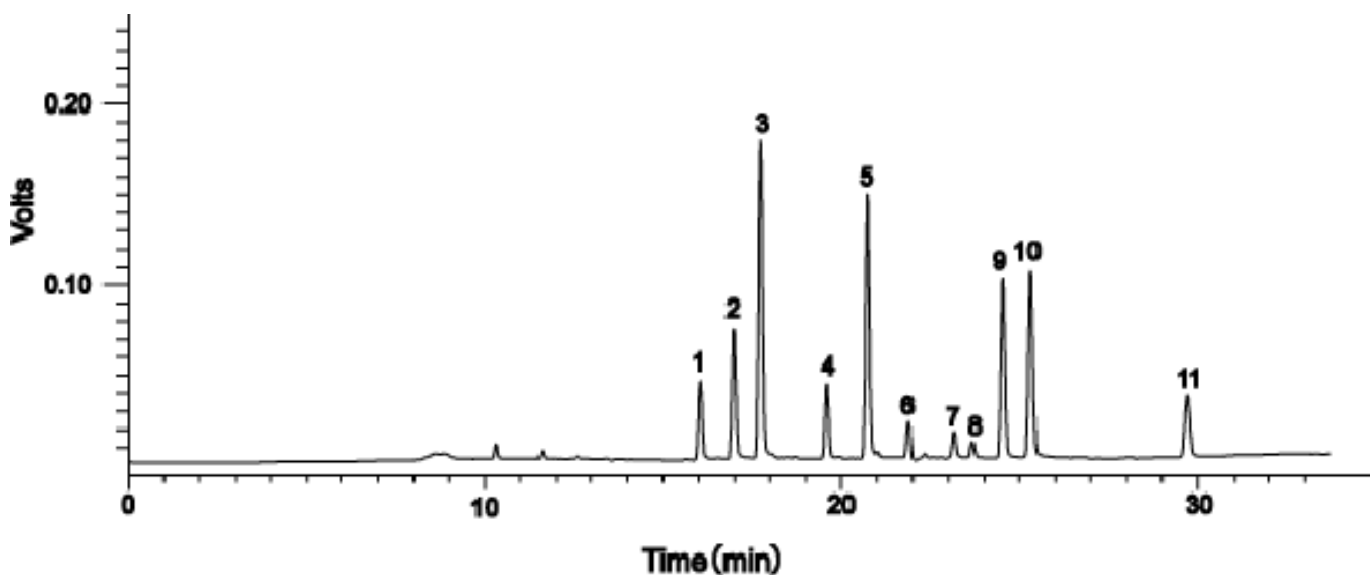


Halogen compounds



System : GC/ECD
 Column : InertCap AQUATIC
 0.32mmI.D. × 60m df=1.4µm
 Column Temp. : 40°C (1min) → 4 °C/min → 100 °C → 10 °C/min → 200 °C (9min)
 Carrier Gas : He 140kPa
 Detection : PDD ECD-mode
 Sample : Halogenated hydrocarbons each 0.4µg/L

Solutes : 1. Chloroform
 2. 1,1,1-Trichloroethane
 3. Carbon Tetrachloride
 4. Trichloroethene
 5. Bromodichloromethane
 6. cis-1,3-Dichloro-1-propene
 7. trans-1,3-Dichloro-1-propene
 8. 1,1,2-Trichloroethane
 9. Tetrachloroethene
 10. Dibromochloromethane
 11. Bromoform