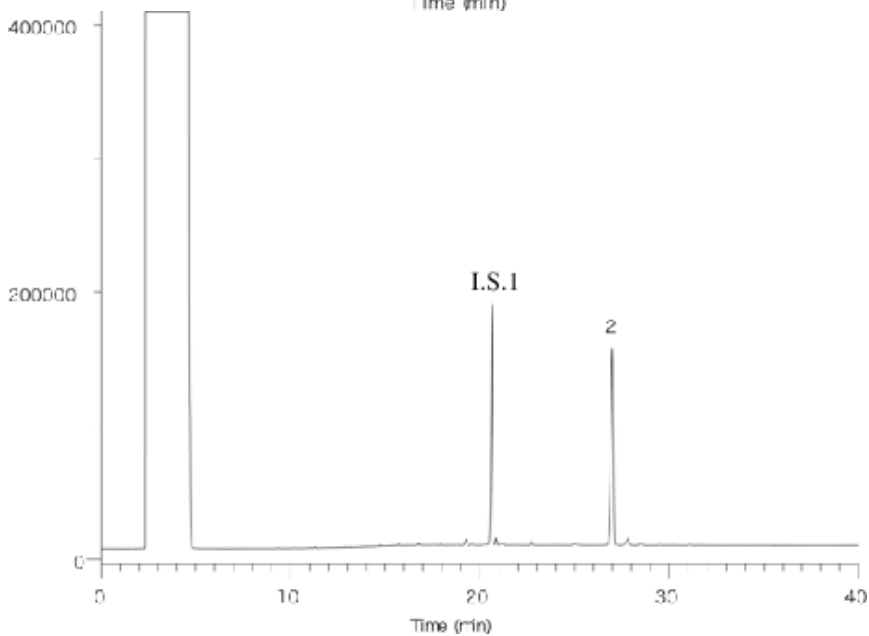
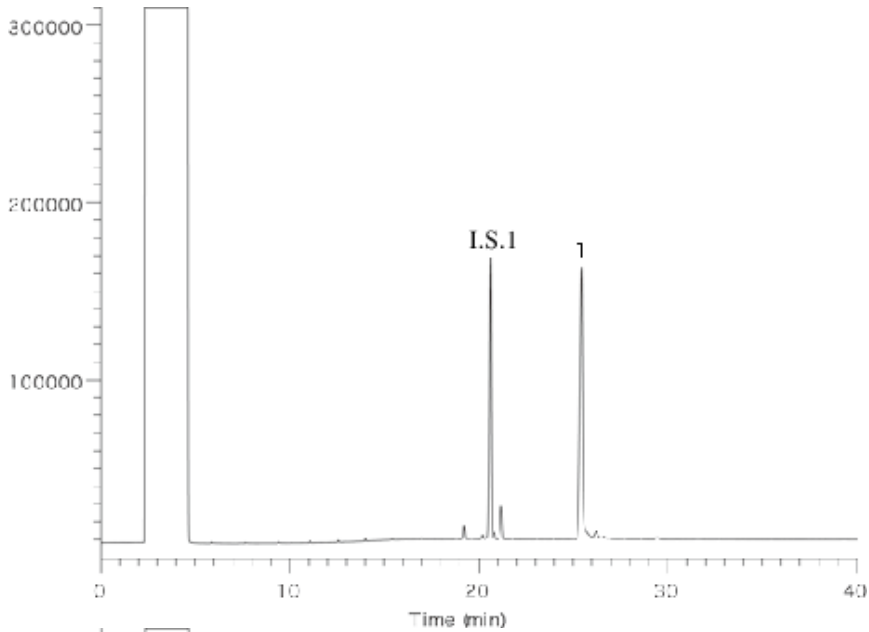


Cholesterols



System : GC/FID
 Column : InertCap 1
 0.25mmI.D. × 30m df=0.25µm
 Column Temp. : 150 °C→10 °C/min→290 °C(26min)
 Carrier Gas : He
 Injection : Splitless 1µL 280°C
 Detection : FID 290°C
 Sample : Cholesterol

Solutes : 1. Cholesterol(100µg/mL)
 2. Cholesterol-TMS(50µg/mL)
 I.S.1 : 5a-Cholestane(50µg/mL)