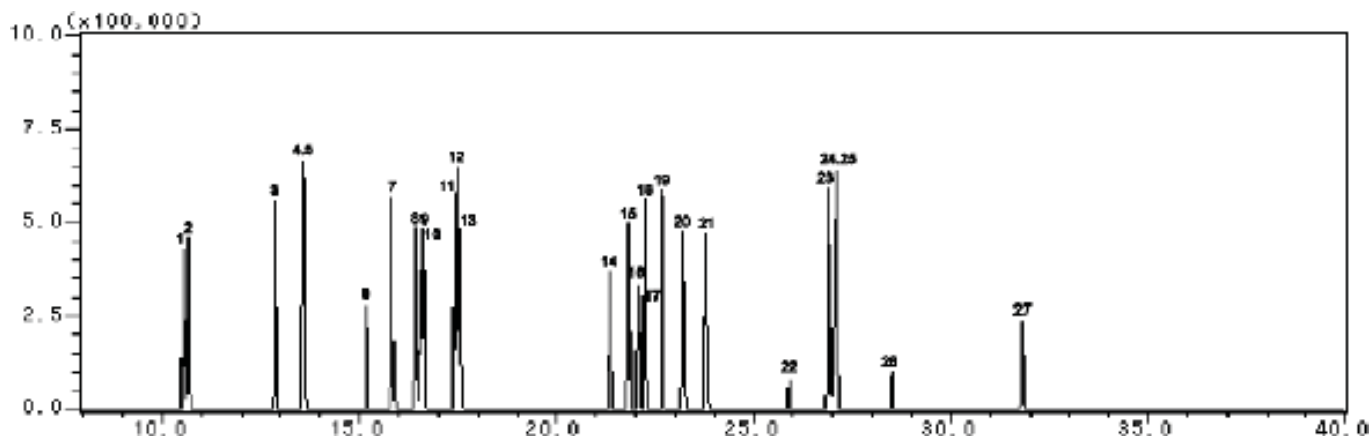


# Phenols



System : GC/MS  
 Column : InertCap 5MS/Sil  
 0.25mmI.D. × 30m df=0.25µm  
 Column Temp. : 40 °C(3min)→5 °C/min→200 °C  
 →20 °C/min→280 °C(3min)  
 Detection : MS  
 Sample : Phenols each 5mg/L

Solutes : 1. Phenol  
 2. 2-Chlorophenol  
 3. 2-Methylphenol  
 4. 4-Methylphenol  
 5. 3-Methylphenol  
 6. 2-Nitrophenol  
 7. 2,4-Dimethylphenol  
 8. 2,4-Dichlorophenol  
 9. 2,5-Dichlorophenol  
 10. 2,3-Dichlorophenol  
 11. 2,6-Dichlorophenol  
 12. 3-Chlorophenol  
 13. 4-Chlorophenol  
 14. 2,3,5-Trichlorophenol  
 15. 2,4,6-Trichlorophenol  
 16. 2,4,5-Trichlorophenol  
 17. 3,4,5-Trichlorophenol  
 18. 2,3,4-Trichlorophenol  
 19. 2,3,6-Trichlorophenol  
 20. 3,5-Dichlorophenol  
 21. 3,4-Dichlorophenol  
 22. 2,4-Dinitrophenol  
 23. 2,3,5,6-Tetrachlorophenol  
 24. 2,3,4,5-Tetrachlorophenol  
 25. 2,3,4,6-Tetrachlorophenol  
 26. 2-Methyl-4,6-dinitrophenol  
 27. Pentachlorophenol