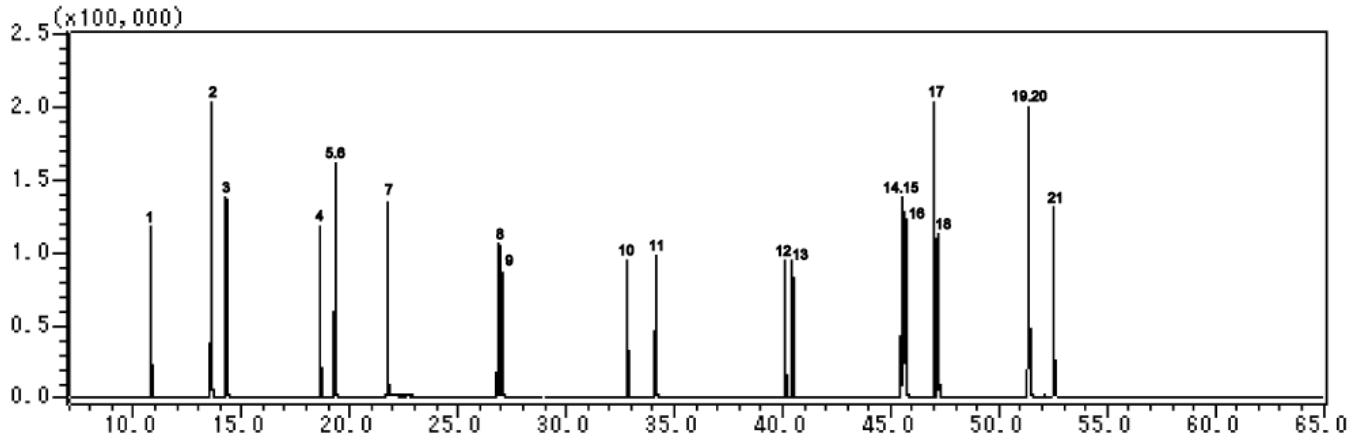


InertSearch™ for GC

InertCap® Applications

Polycyclic aromatic hydrocarbons

Data No. GA021-0000



System : GC/MS
Column : InertCap 17MS
0.25mm I.D. \times 30m ϕ = 0.25 μ m
Column Temp. : 80°C (3min) \rightarrow 5°C/min \rightarrow 340°C (5min)
Detection : MS
Sample : Polycyclic aromatic hydrocarbons each 10mg/L

Solutes :

1. Naphthalene
2. 2-Methylnaphthalene
3. 1-Methylnaphthalene
4. Acenaphthylene
5. Acenaphthene
6. Biphenyl
7. Fluorene
8. Phenanthrene
9. Anthracene
10. Fluoranthene
11. Pyrene
12. Chrysene
13. Benzo [a] anthracene
14. Benzo [b] fluoranthene
15. Benzo [k] fluoranthene
16. Benzo [e] pyrene
17. Benzo [a] pyrene
18. Benzo [j] fluoranthene
19. Dibenz [a,h] anthracene
20. Benzo [g,h,i] perylene
21. Indeno [1,2,3-cd] pyrene