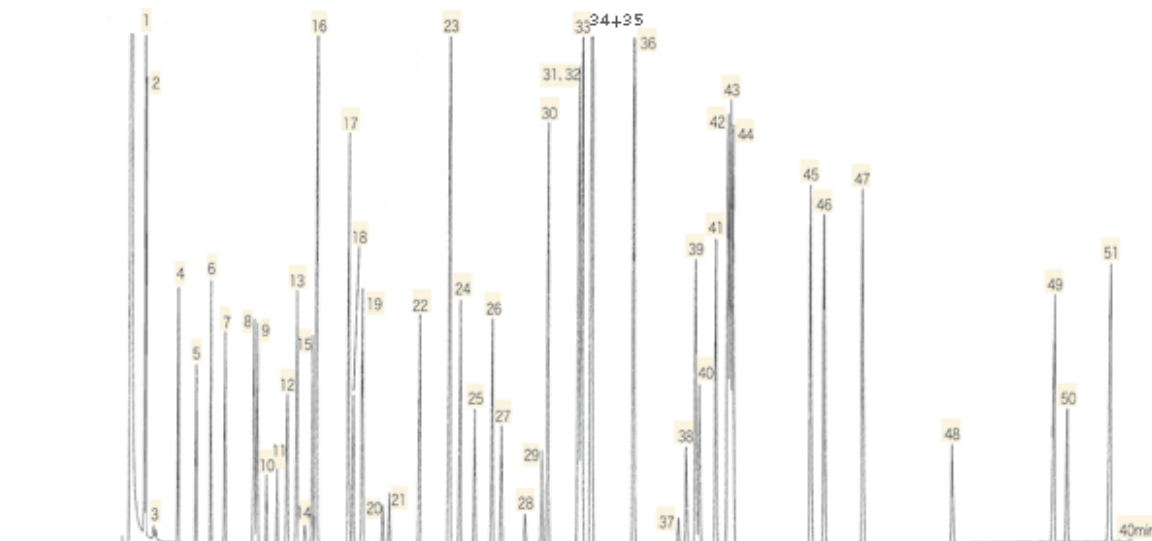


# Halocarbons



System	: GC/FID	Solutes : 1. Bromomethane	26. 1,3-Dichloropropane
Column	: InertCap AQUATIC 0.25mmI.D. × 60m df=1.0µm	2. Chloroethane	27. Tetrachloroethene
Column Temp.	: 40°C → 4°C/min → 200°C	3. Trichlorofluoromethane	28. Dibromochloromethane
Carrier Gas	: He 190kPa	4. 1,1-Dichloroethene	29. 1-Chlorohexane
Injection	: Split 1 : 100 0.5µL	5. Methylenechloride	30. 1,2-Dibromoethane
Detection	: FID Range 1 × 16	6. trans-1,2-Dichloroethene	31. Chlorobenzene
Sample	: Halogenated hydrocarbons	7. 1,1-Dichloroethane	32. 1,1,1,2-Tetrachloroethane
		8. 2,2-Dichloropropane	33. Ethylbenzene
		9. cis-1,2-Dichloroethene	34. o-Xylene
		10. Chloroform	35. m-Xylene
		11. Bromochloromethane	36. p-Xylene
		12. 1,1,1-Trichloroethane	37. Bromoform
		13. 1,1-Dichloropropene	38. 1,1,2,2-Tetrachloroethane
		14. Carbon Tetrachloride	39. p-Bromofluorobenzene
		15. 1,2-Dichloroethane	40. 1,2,3-Trichloropropane
		16. Benzene	41. Bromobenzene
		17. α-Trifluorotoluene	42. o-Chlorotoluene
		18. Trichloroethene	43. m-Chlorotoluene
		19. 1,2-Dichloropropane	44. p-Chlorotoluene
		20. Bromodichloromethane	45. 1,3-Dichlorobenzene
		21. Dibromomethane	46. 1,4-Dichlorobenzene
		22. cis-1,3-Dichloropropene	47. 1,2-Dichlorobenzene
		23. Toluene	48. 1,2-Dibromo-3-chloropropane
		24. trans-1,3-Dichloropropene	49. 1,2,4-Trichlorobenzene
		25. 1,1,2-Trichloroethane	50. 1,1,2,3,4,4,-Hexachloro-1,3-butadiene
			51. 1,2,3-Trichlorobenzene