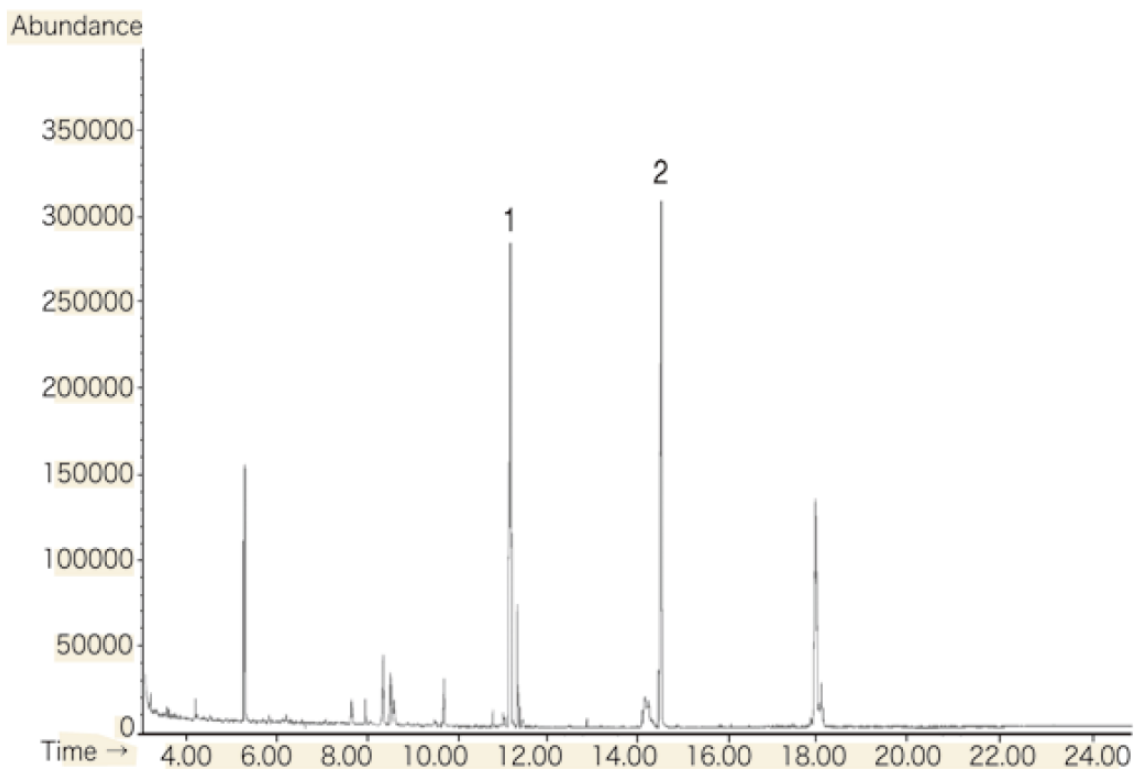


# Moldy odors



System :GC/MS P&T

Solutes : 1. 2-MIB(2-Methyl-isoborneol)

Column :InertCap 1  
0.25mmI.D. × 30m df=0.4µm

2. Geosmine

Column Temp. : 40 °C(1min Hold)→10 °C/min→220 °C

Carrier Gas : He 70kPa

Injection : P&T

Detection : MS

Sample :1µg/L