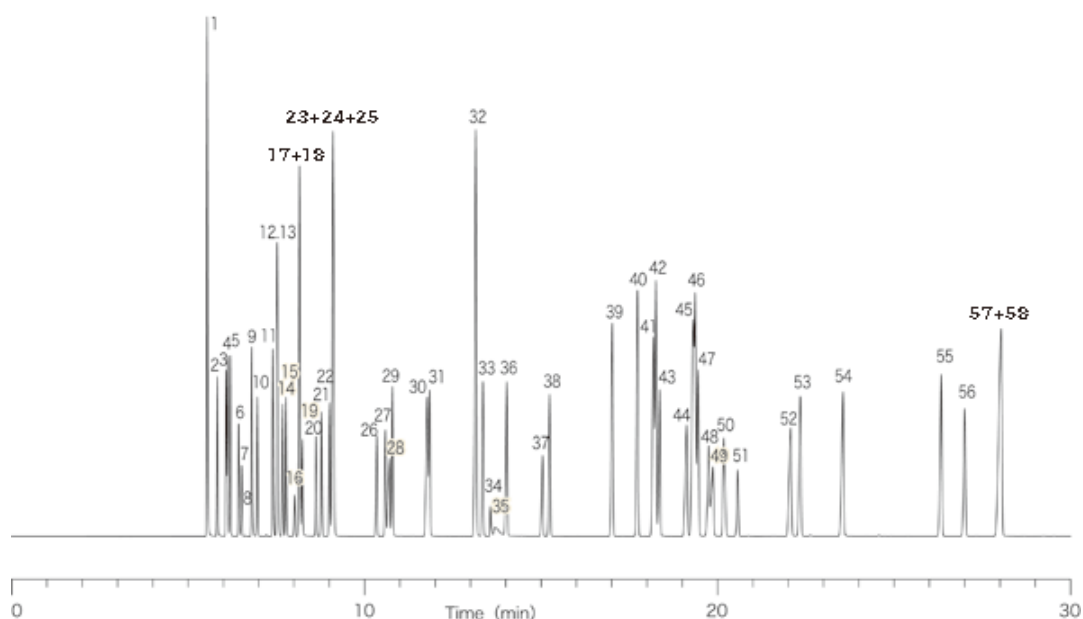


Organic solvents



System	: GC/FID	Solutes :	1. Methanol	26. Trichloroethylene	51. 1,1,2,2-tetrachloroethane
Column	: InertCap 5MS/Sil 0.25mmI.D. × 60m df=0.25µm		2. Ethanol	27. 1,4-Dioxane	52. Methylcyclohexanol
Column Temp.	: 40°C (5 min) → 4°C/min → 230°C		3. Acetone	28. Ethyl cellosolve	53. Methylcyclohexanone
Carrier Gas	: He		4. i-Propanol	29. n-Propyl acetate	54. Phenol
Injection	: Split		5. Ethyl ether	30. i-Amyl alcohol	55. o-Dichlorobenzene
Detection	: FID		6. Methyl acetate	31. Methyl i-butyl ketone	56. o-Cresol
Sample	: Organic solvents		7. Dichloromethane	32. n-Amyl alcohol	57. m-Cresol
			8. Carbon disulfide	33. Toluene	58. p-Cresol
			9. n-Propanol	34. i-Butyl acetate	
			10. trans-1,2- Dichloroethylene	35. N,N-Dimethylformamide	
			11. Methyl ethyl ketone	36. Methyl n-butyl ketone	
			12. Hexane	37. n-Butyl acetate	
			13. 2-Butanol	38. Tetrachloroethylene	
			14. cis-1,2- Dichloroethylene	39. Chlorobenzene	
			15. Ethyl acetate	40. Ethylbenzene	
			16. Chloroform	41. m-Xylene	
			17. i-Butanol	42. p-Xylene	
			18. Tetrahydrofuran	43. i-Amyl acetate	
			19. Methyl cellosolve	44. Cyclohexanol	
			20. 1,1,1-Trichloroethane	45. Styrene	
			21. 1,2-Dichloroethane	46. Cyclohexanone	
			22. i-Propyl acetate	47. o-Xylene	
			23. Benzene	48. Cellosolve acetate	
			24. n-Butanol	49. Butyl cellosolve	
			25. Carbon Tetrachloride	50. n-Amyl acetate	