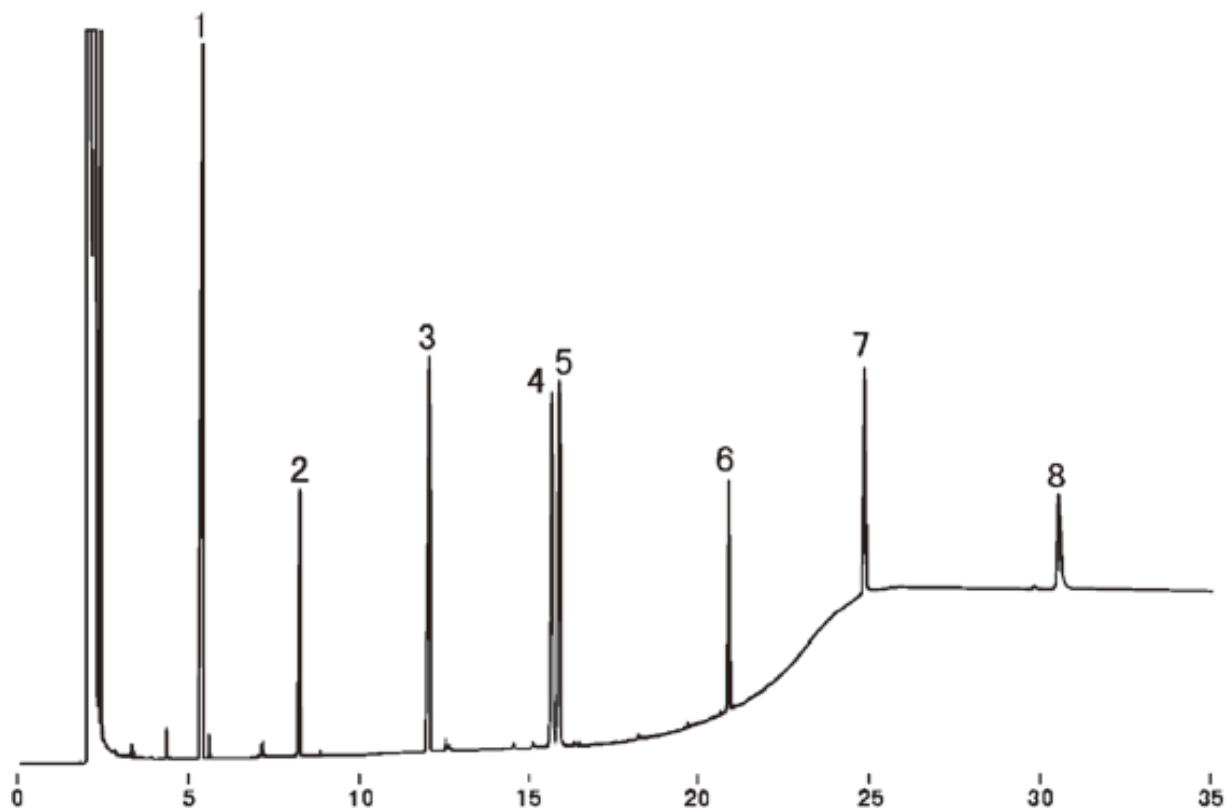


# Polycyclic aromatic hydrocarbon



System : GC/FID  
 Column : InertCap 1  
 0.25mm I.D. × 30m df=0.4µm  
 Column Temp. : 120°C (1min) → 6°C/min → 200°C → 10°C/min → 280°C  
 Carrier Gas : He 80kPa  
 Injection : Split 1 : 100 1µL  
 Detection : FID Range 10<sup>4</sup>  
 Sample : Polycyclic aromatic hydrocarbons

Solutes : 1. Naphthalene  
 2. Biphenyl  
 3. Fluorene  
 4. Phenanthrene  
 5. Anthracene  
 6. Pyrene  
 7. Triphenylene  
 8. 3,4-Benzopyrene