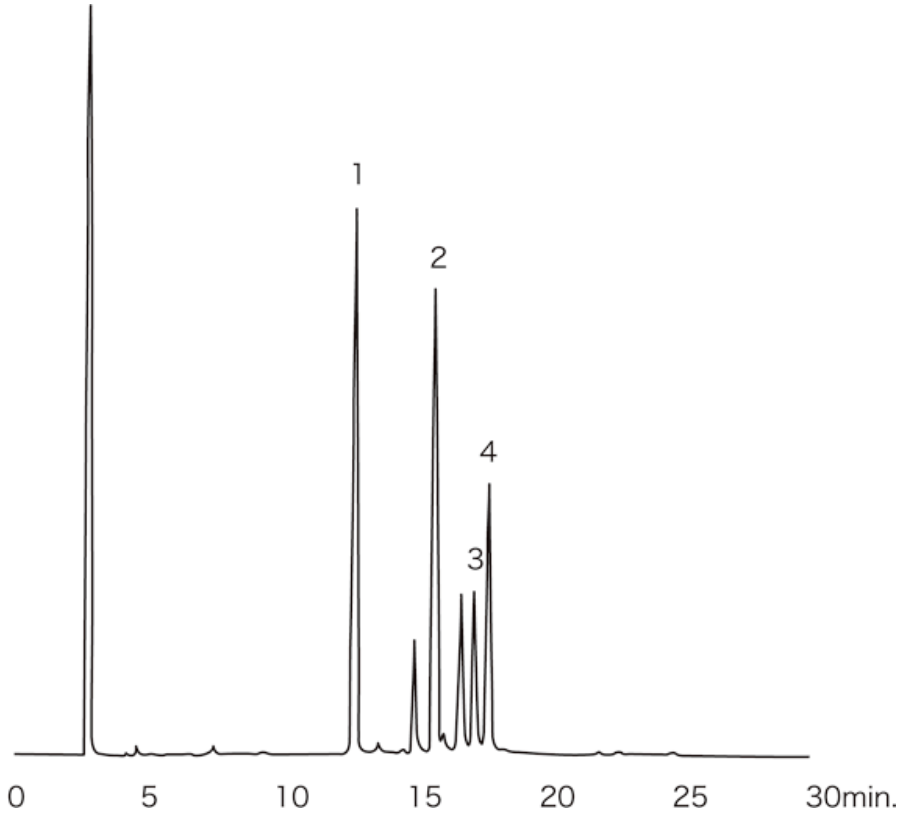


Sterols



System : GC/FID
 Column : InertCap 1
 0.25mm I.D. × 30m df=0.4µm
 Column Temp. : 300°C
 Carrier Gas : He 260kPa
 Injection : Split 1 : 10 1µL
 Detection : FID Range 1 × 128
 Sample : Sterols

Solutes : 1. Cholesterol
 2. Stigmasterol
 3. β-Sitosterol
 4. Lanosterol