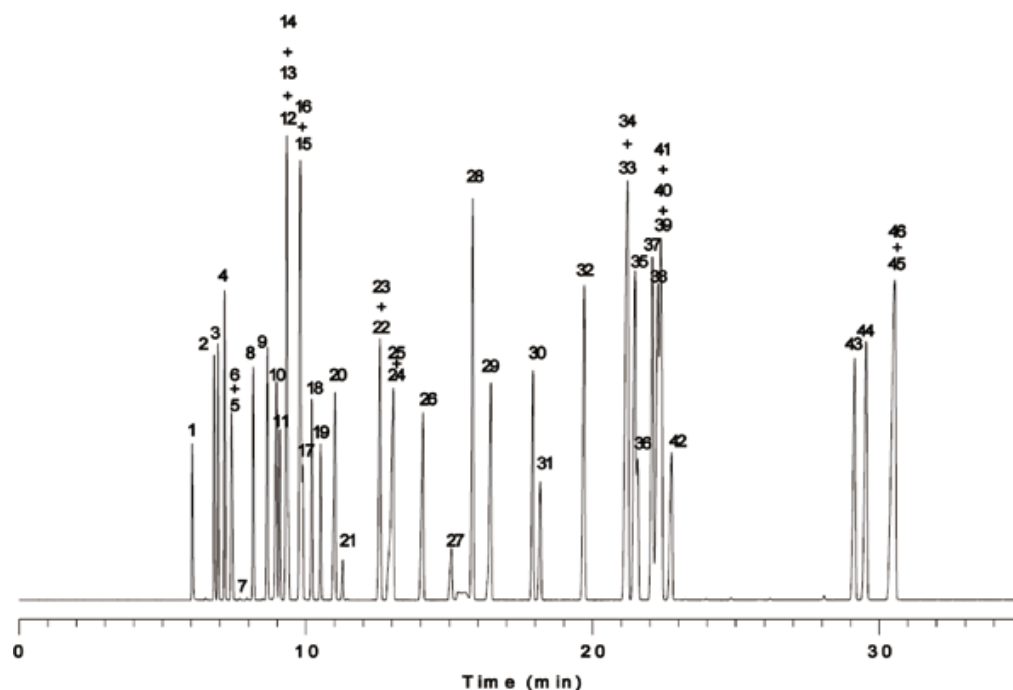


Organic solvents



System	: GC/FID	Solutes : 1. Methanol	26. i-Amyl alcohol
Column	: InertCap 1 0.25mm I.D. × 60m df=0.4µm	2. Acetone	27. N,N-Dimethyl formamide
Column Temp.	: 40°C(5min)→4°C/min→230°C(5min)	3. i-Propanol	28. Toluene
Carrier Gas	: He 130kPa	4. Ethyl ether	29. Methyl-n-butyl ketone
Injection	: Split 100mL/min 1µL 250°C	5. Dichloromethane	30. n-Butyl acetate
Detection	: FID Range 10 ¹ 250°C	6. Methyl acetate	31. Tetrachloroethylene
Sample	: Organic solvents Mixed evenly	7. Carbon disulfide	32. Chlorobenzene
		8. trans-1,2-Dichloroethylene	33. m-Xylene
		9. Methyl ethyl keton	34. p-Xylene
		10. 2-Butanol	35. Cyclohexanone
		11. cis-1,2-Dichloroethylene	36. Cyclohexanol
		12. Ethyl acetate	37. Styrene
		13. n-Hexane	38. 1-Methylcyclohexanol
		14. Chloroform	39. o-Xylene
		15. Tetrahydrofuran	40. 1,1,2,2-Tetrachloroethane
		16. i-Butanol	41. Cellosolve acetate
		17. Methyl cellosolve	42. Butyl cellosolve
		18. 1,2-Dichloroethane	43. o-Dichlorobenzene
		19. 1,1,1-Trichloroethane	44. o-Cresol
		20. n-Butanol	45. m-Cresol
		21. Carbon Tetrachloride	46. p-Cresol
		22. 1,4-Dioxane	
		23. Trichloroethylene	
		24. Ethyl cellosolve	
		25. n-Propyl acetate	