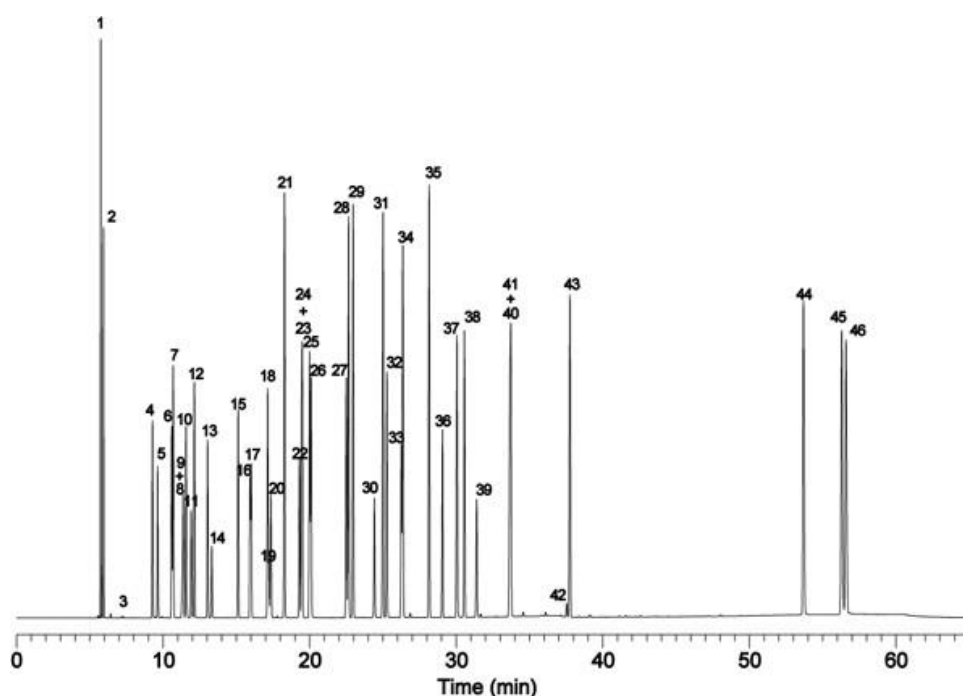


Organic solvents



System	: GC/FID	Solutes :	1. n-Hexane	26. i-Butanol
Column	: InertCap WAX 0.25mm I.D. × 60m df=0.5µm		2. Ethyl ether	27. n-Butanol
Column Temp.	: 40°C(5min)→4°C/min→230°C(5min)		3. Carbon disulfide	28. p-Xylene
Carrier Gas	: He 130kPa		4. Acetone	29. m-Xylene
Injection	: Split 100mL/min 1µL 250°C		5. Methyl acetate	30. Methyl cellosolve
Detection	: FID Range 10 ¹ 250°C		6. trans-1,2-Dichloroethylene	31. o-Xylene
Sample	: Organic solvents Mixed evenly		7. Tetrahydrofuran	32. i-Amyl alcohol
			8. Carbon Tetrachloride	33. Ethyl cellosolve
			9. 1,1,1-Trichloroethane	34. Chlorobenzene
			10. Ethyl acetate	35. Styrene
			11. Methanol	36. Cellosolve acetate
			12. Methyl ethyl keton	37. Cyclohexanone
			13. i-Propanol	38. 1-Methylcyclohexanol
			14. Dichloromethane	39. N,N-Dimethyl formamide
			15. n-Propyl acetate	40. Butyl cellosolve
			16. cis-1,2-Dichloroethylene	41. Cyclohexanol
			17. Trichloroethylene	42. 1,1,2,2-Tetrachloroethane
			18. 2-Butanol	43. o-Dichlorobenzene
			19. Chloroform	44. o-Cresol
			20. Tetrachloroethylene	45. p-Cresol
			21. Toluene	46. m-Cresol
			22. 1,4-Dioxane	
			23. n-Butyl acetate	
			24. 1,2-Dichloroethane	
			25. Methyl-n-butyl ketone	