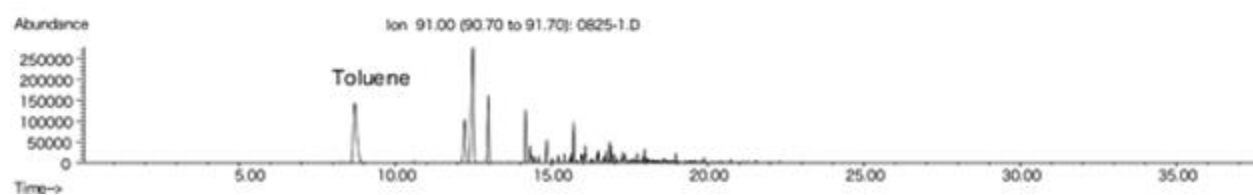
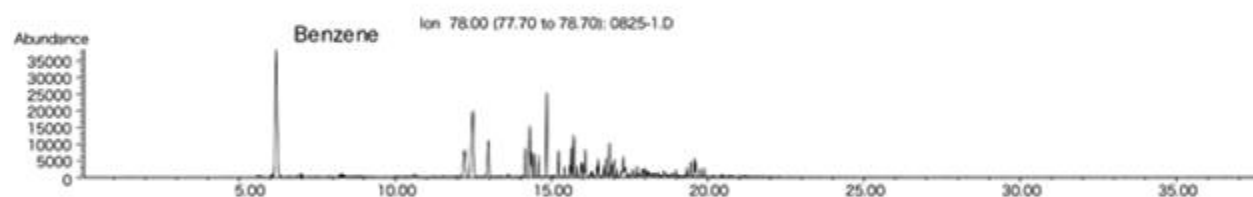
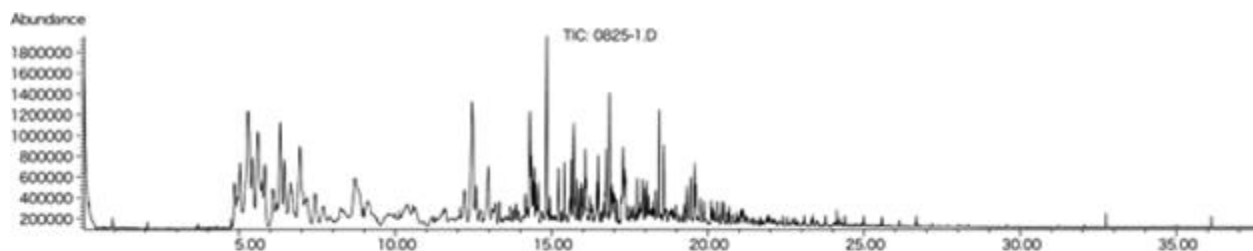


Crude oil



System	: GC/MS OPTIC3
Column	: InertCap 5MS/Sil 0.25mmI.D. x 30m df=0.25µm
Column Temp.	: 40°C(10min)→15°C/min→300°C(10min)
Injection	: DMI 1µL 40°C→5°C/sec→150°C
Detection	: MS Scan
Sample	: Crude oil