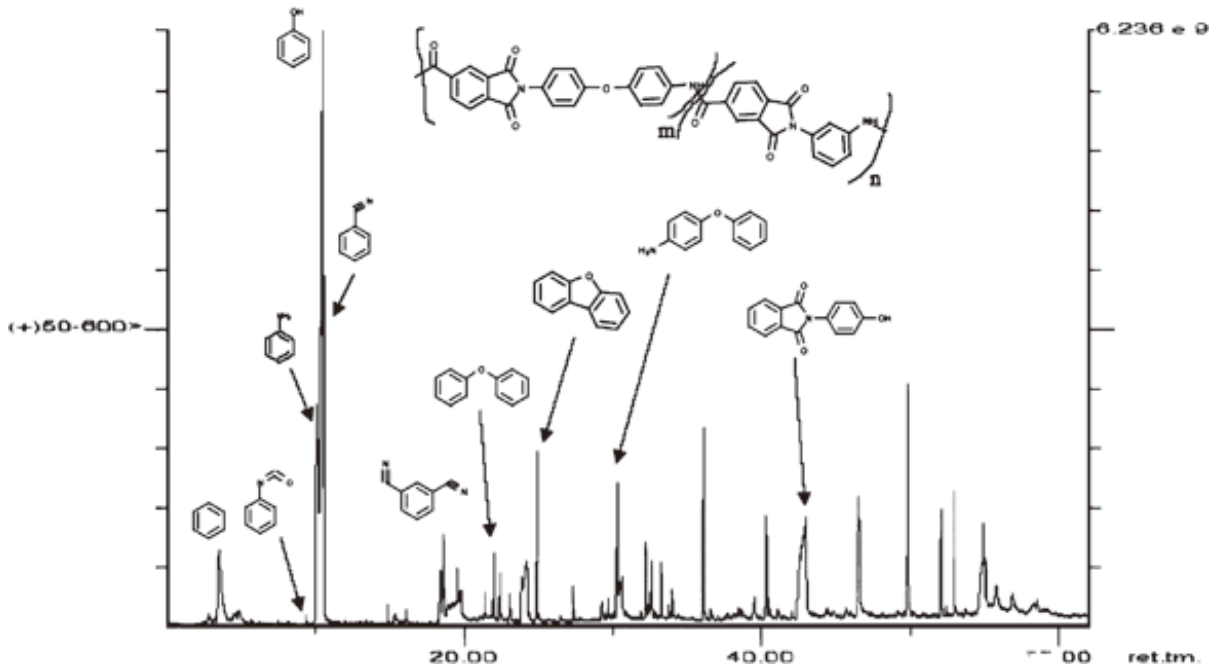


# Polyamideimide



System : GC/MS OPTIC3  
 Column : InertCap 5MS/Sil  
 0.25mmI.D. x 30m df=0.25µm  
 Column Temp. : 35°C(5min)→10°C/min→310°C(15min)  
 Injection : DMI  
 40°C→16°C/sec→600°C  
 Detection : MS Scan  
 Sample : Polyamideimide