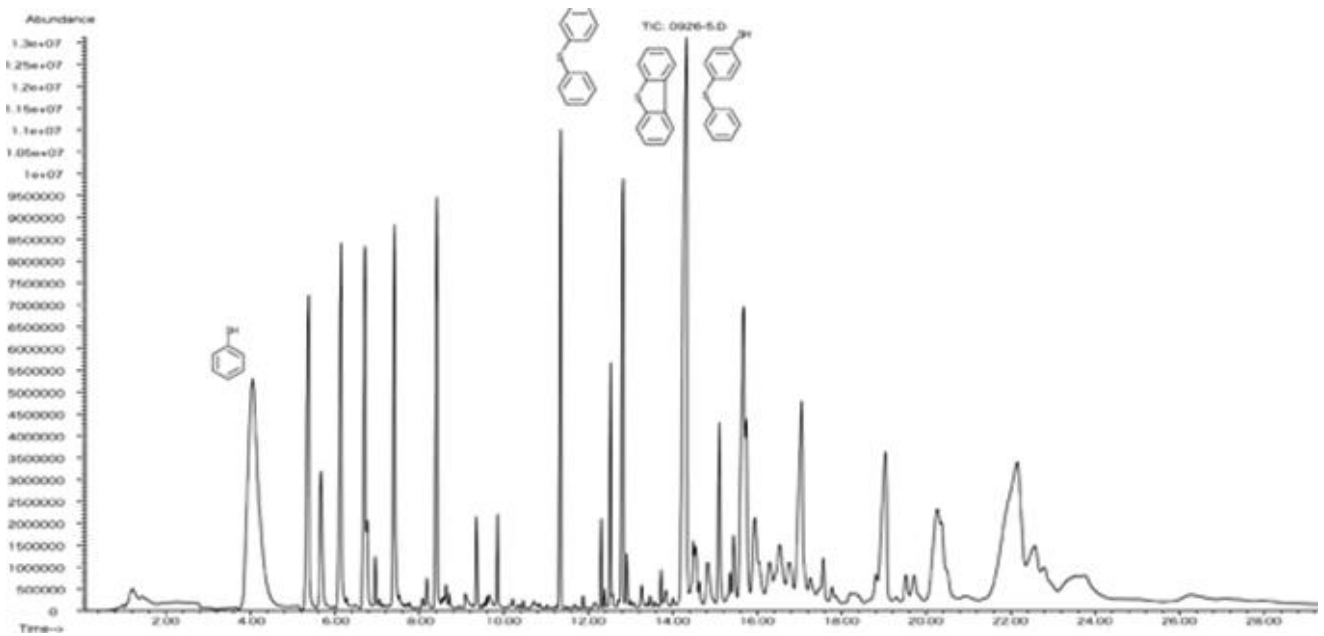


Polyphenylenesulfide



System : GC/MS OPTIC3
 Column : InertCap 5MS/Sil
 0.25mmI.D. × 30m df=0.25µm
 Column Temp. : 66°C(3min)→15°C/min→310°C(15min)
 Injection : DTD 0.34mg
 40°C→16°C/sec→600°C
 Detection : MS Scan
 Sample : Poly phenylene sulfide