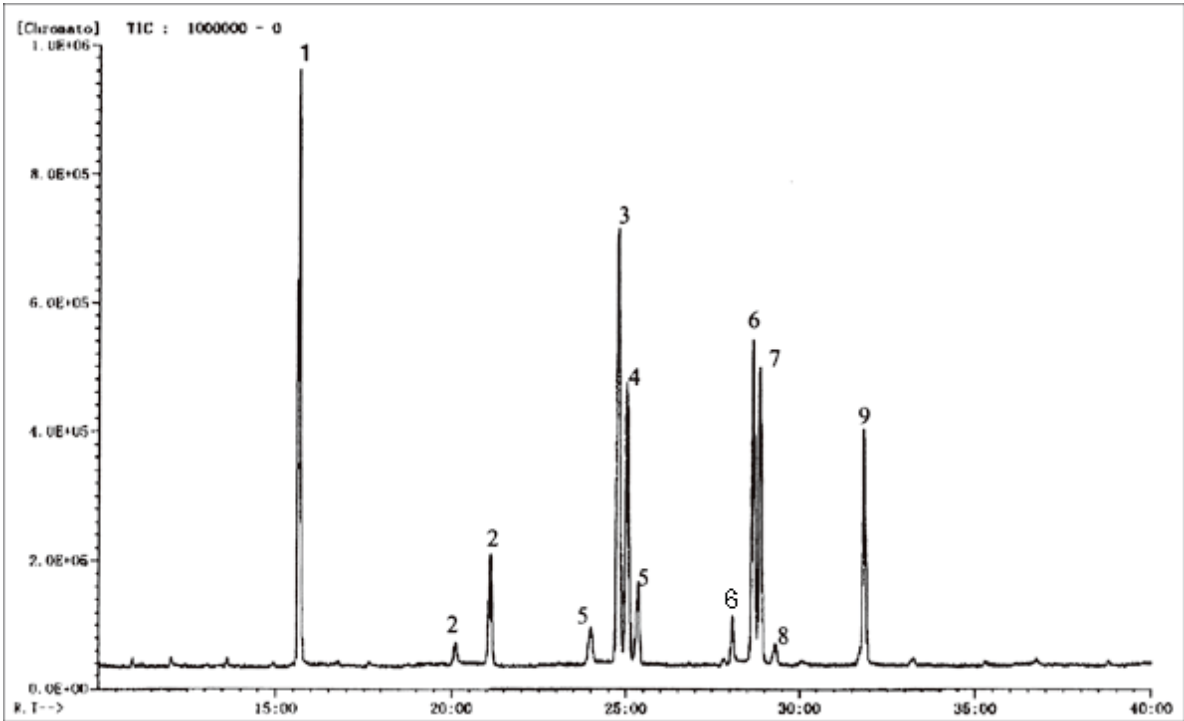


# Aldehyde-DNPH



System : GC/MS  
 Column : InertCap 1  
 0.25mmI.D. × 30m df=0.4µm  
 Column Temp. : 50°C→20°C/min→190°C(13min Hold)→3°C/min→250°C  
 Carrier Gas : He 70kPa  
 Injection : Splitless 1µL  
 250°C  
 Detection : MS Scan  
 Sample : each 3mg/L

Solutes : 1. Formaldehyde-DNPH  
 2. Acetaldehyde-DNPH  
 3. Acetone-DNPH  
 4. Acrolein-DNPH  
 5. Propionaldehyde-DNPH  
 6. 2-Butanone (MEK) -DNPH  
 7. Methacrolein-DNPH  
 8. n-Butylaldehyde-DNPH  
 9. Crotonaldehyde-DNPH