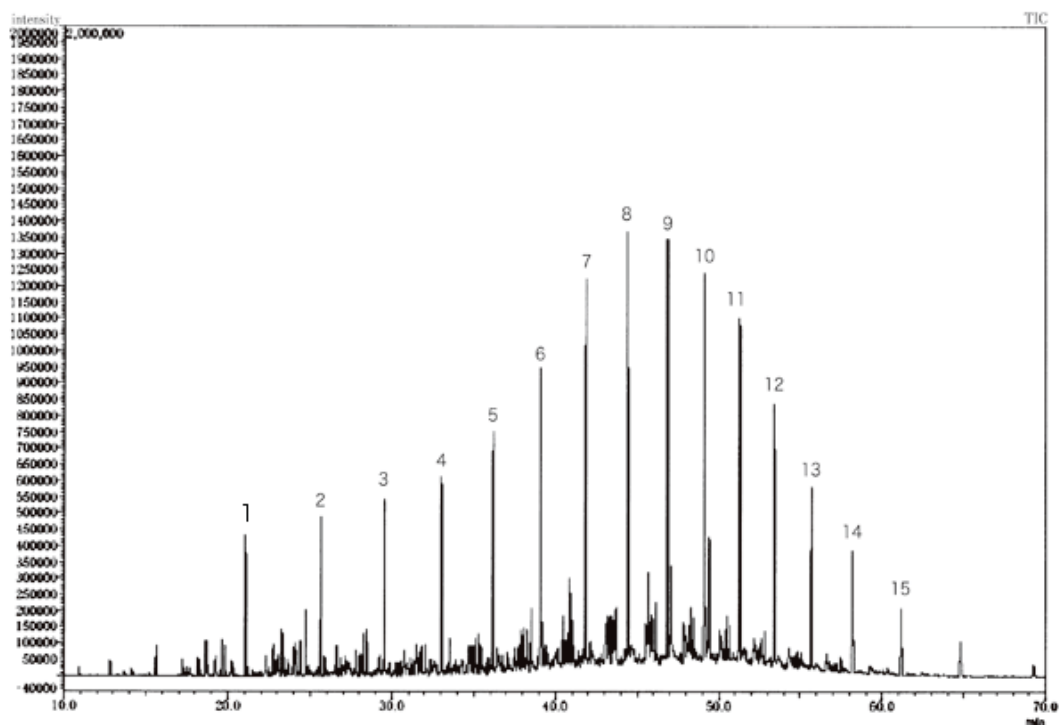


# InertSearch™ for GC

InertCap® Applications

## Diesel

Data No. GA056-0000



System : GC/MS

Column : InertCap 1

0.25mm I.D. × 60m df=0.25µm

Column Temp. : 40°C (10min) → 5°C/min → 250°C (8min)

Carrier Gas : He 120kPa

Injection : Split 1:100 1µL

250°C

Detection : MS Scan

Sample : Light oil

Solutes : 1. Nonane

2. Decane

3. Undecane

4. Dodecane

5. Tridecane

6. Tetradecane

7. Pentadecane

8. Hexadecane

9. Heptadecane

10. Octadecane

11. Nonadecane

12. Eicosane

13. Heneicosane

14. Docosane

15. Tricosane