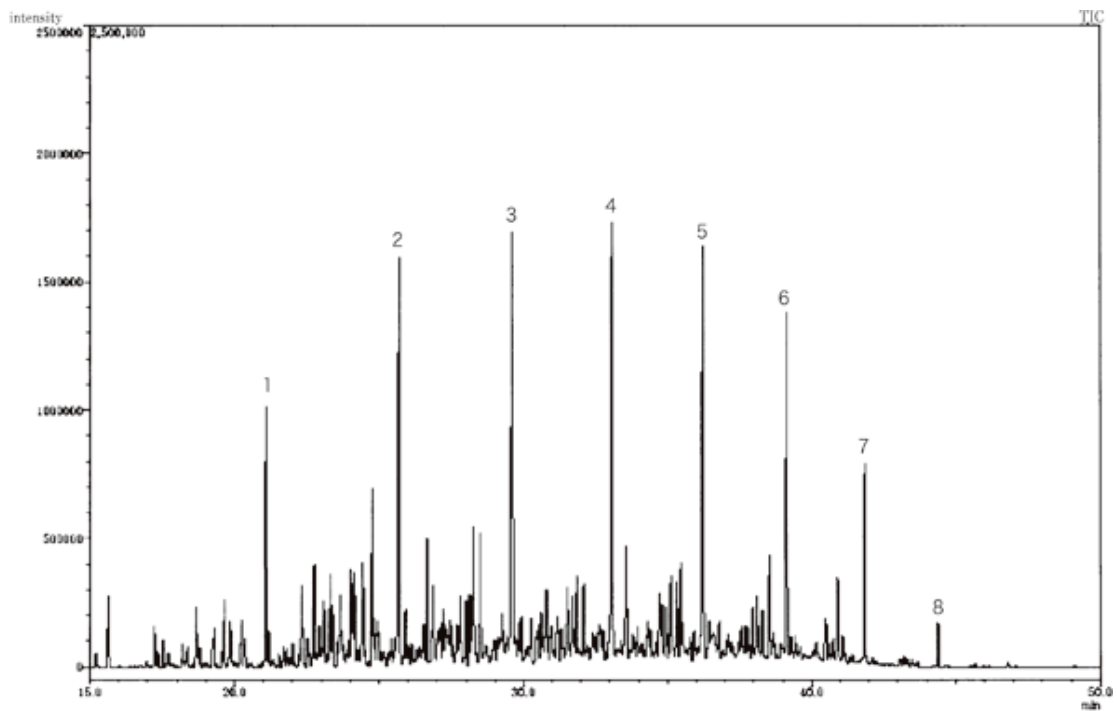


# Kerosene



System : GC/MS  
 Column : InertCap 1  
 0.25mm I.D. × 60m df=0.25µm  
 Column Temp. : 40°C(10min) → 5°C/min → 250°C(8min)  
 Carrier Gas : He 120kPa  
 Injection : Split 1:100 1µL  
 250°C  
 Detection : MS Scan  
 Sample : Kerosene

Solutes : 1. Nonane  
 2. Decane  
 3. Undecane  
 4. Dodecane  
 5. Tridecane  
 6. Tetradecane  
 7. Pentadecane  
 8. Hexadecane