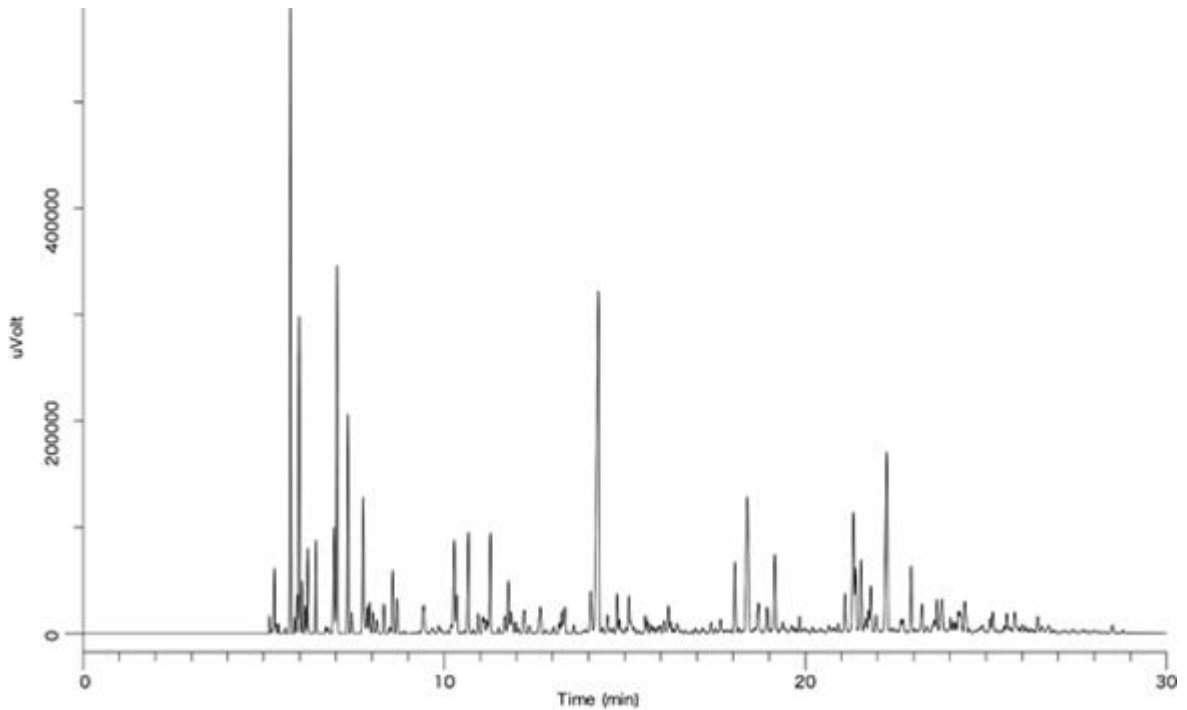


Gasoline



| | |
|--------------|---|
| System | : GC/FID |
| Column | : InertCap 1 0.25mm I.D. × 60m df=0.25µm |
| Column Temp. | : 40°C (10min) → 5°C/min → 250°C (8min) |
| Carrier Gas | : He 140kPa |
| Injection | : Split 1:100 1µL 250°C |
| Detection | : FID Range 101 |
| Sample | : Gasoline |