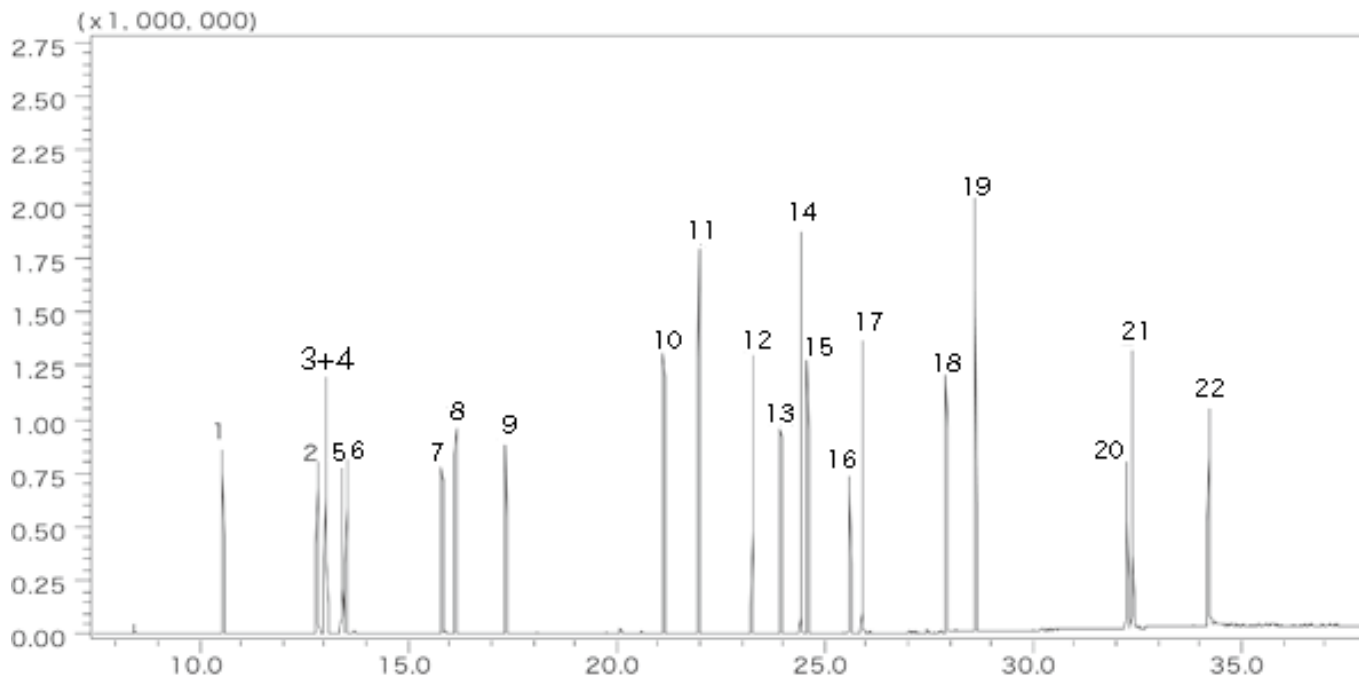


Automotive interior materials

Data No. 060



System : GC/FID TD2530
 Column : InertCap 1MS
 0.25mm I.D. × 60m df=0.25µm
 Column Temp. : 40°C (5min) → 10°C/min. → 280°C (21min)
 Carrier Gas : He 1mL/min (constant flow)
 Injection : TD/Split 1 : 5
 Detection : MS Scan
 Sample : each 100ng Solvent : Ethanol

Solutes : 1. Toluene
 2. Ethylbenzene
 3. m-Xylene
 4. p-Xylene
 5. Styrene
 6. o-Xylene
 7. p-Dichlorobenzene
 8. 2-Ethyl-1-hexanol
 9. Nonanal
 10. D6 (Hexamethylcyclotrisiloxane)
 11. Tetradecane
 12. BHT : Butylated hydroxytoluene
 13. DEP : Diethyl phthalate
 14. C16 : n-Hexadecane
 15. TBP : Tributyl phosphate
 16. TCEP : Tris (2-chloroethyl) phosphate
 17. DBA : Di-n-butyl adipate
 18. DBP : Di-n-butyl phthalate
 19. C20 : n-Eicosane
 20. TPP : Triphenyl phosphate
 21. DOA : Di (2-ethylhexyl) adipate
 22. DOP : Di (2-ethylhexyl) phthalate □ □