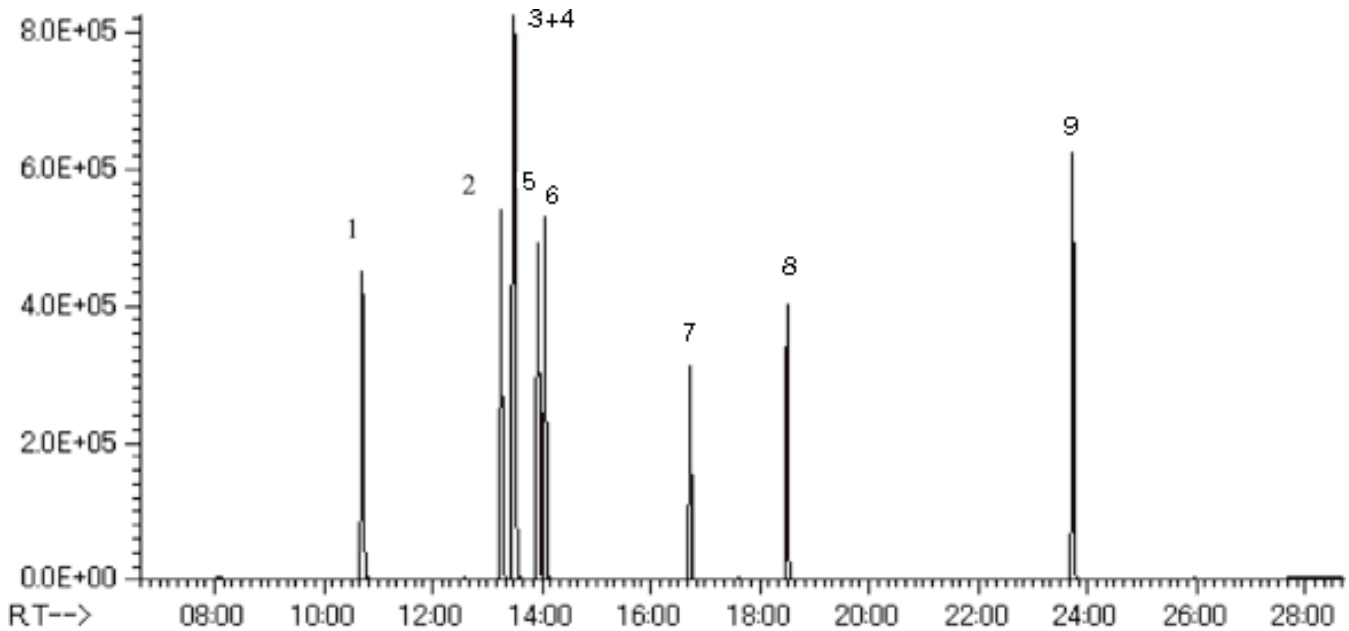


Indoor air



System : GC/MS T-Dex II
 Column : InertCap 1MS
 0.25mmI.D. × 60m df=0.25µm
 Column Temp. : 40°C(5min)→10°C/min→280°C(21min)
 Carrier Gas : He 1mL/min (constant flow)
 Injection : TD/Split 1:5
 Detection : MS Scan
 Sample : STD for indoor air:each 100ng Solvent: Methanol

Solutes : 1. Toluene
 2. Ethylbenzene
 3. m-Xylene
 4. p-Xylene
 5. Styrene
 6. o-Xylene
 7. p-Dichlorobenzene
 8. Nonanal
 9. Tetradecanel