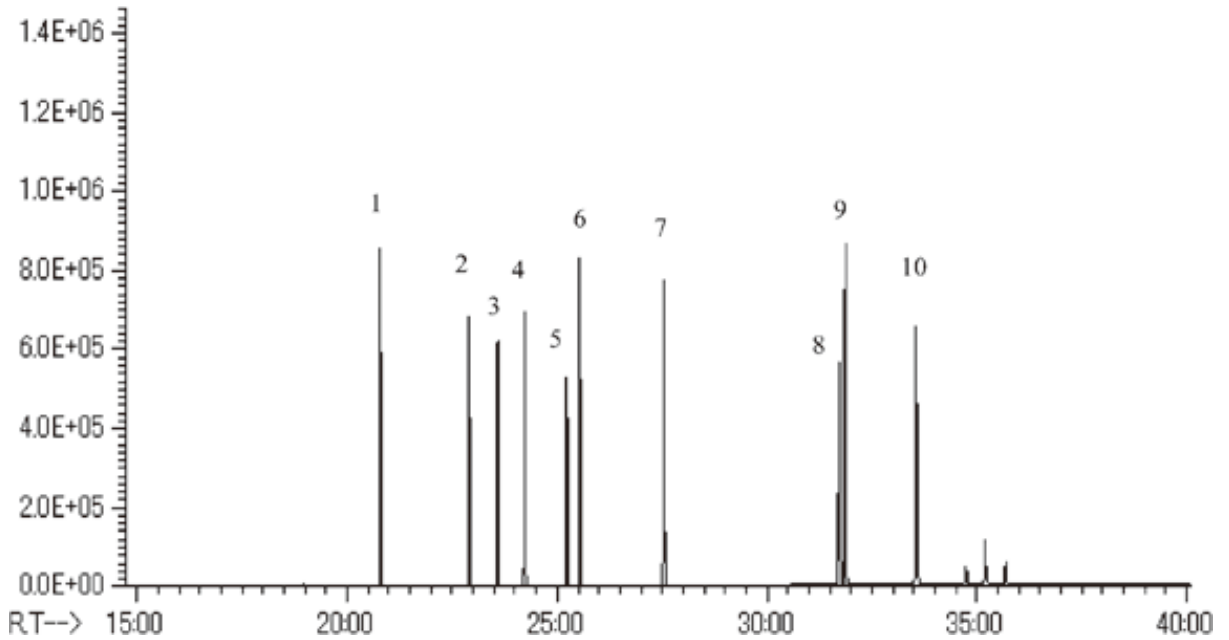


Outgas released from LSI Materials



System : GC/MS T-Dex II
 Column : InertCap 1MS 0.25mmI.D. × 60m
 df=0.25µm
 Column Temp. : 40°C(5min)→10°C/min→280°C(21min)
 Carrier Gas : He 1mL/min (constant flow)
 Injection : TD/Split 1:5
 Detection : MS Scan
 Sample : STD for clean room air:each 100ng Solvent: Acetone

Solutes : 1. D6 (Dodecamethylcyclohexasiloxane)
 2. BHT : Butylated hydroxytoluenee
 3. DEP : Diethyl phthalate
 4. TBP : Tributyl phosphate
 5. TCEP : Tris (2-chloroethyl) phosphate
 6. DBA : Di-n-butyl adipate
 7. DBP : Di-n-butyl phthalate
 8. TPP : Triphenyl phosphate
 9. DOA : Di (2-ethylhexyl) adipate
 10. DOP : Di (2-ethylhexyl) phthalate