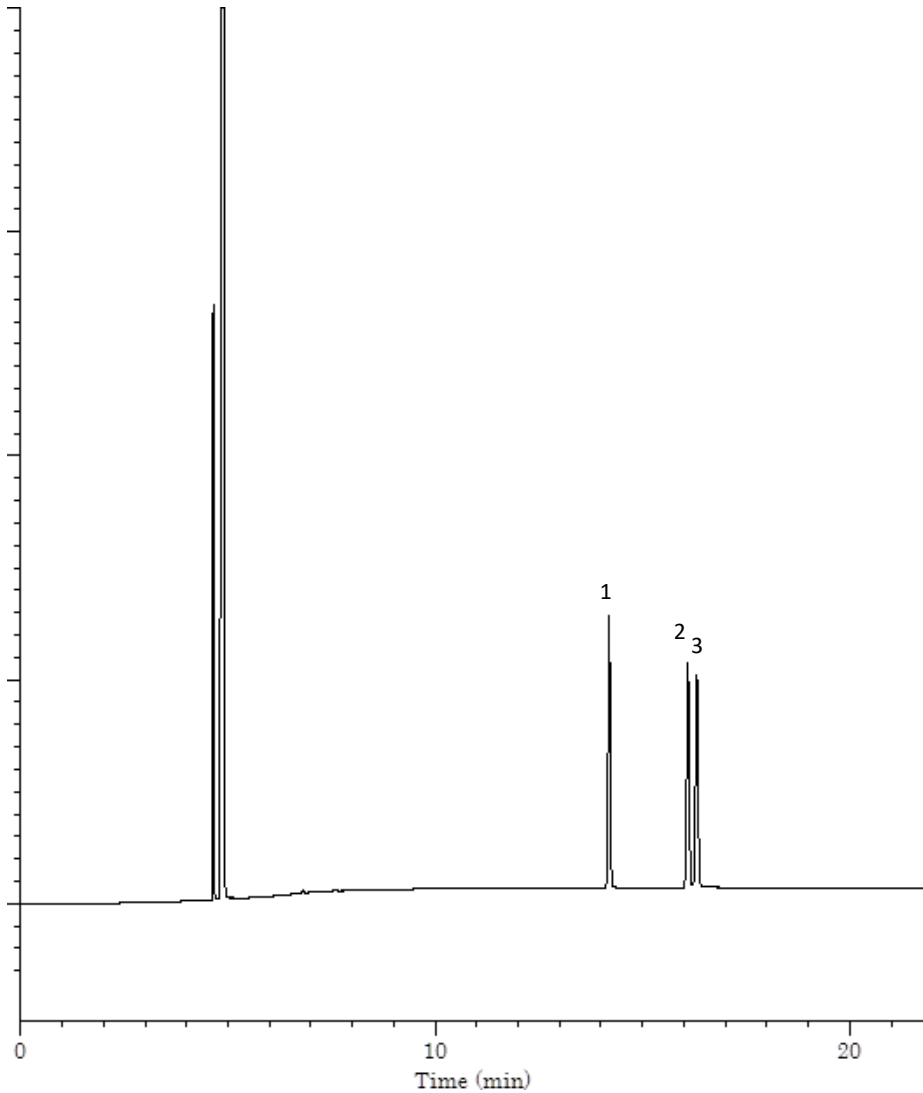


Cresols



System	: GC/FID	Solutes : 1. o-Cresol
Column	: TC-FFAP 0.25mmI.D. × 60m df=0.5µm	2. p-Cresol
Column Temp.	: 150°C→10°C/min→220°C	3. m-Cresol
Carrier Gas	: He 1mL/min (constant flow)	
Injection	: 250°C	
Detection	: FID 250°C	
Sample	: Cresols	