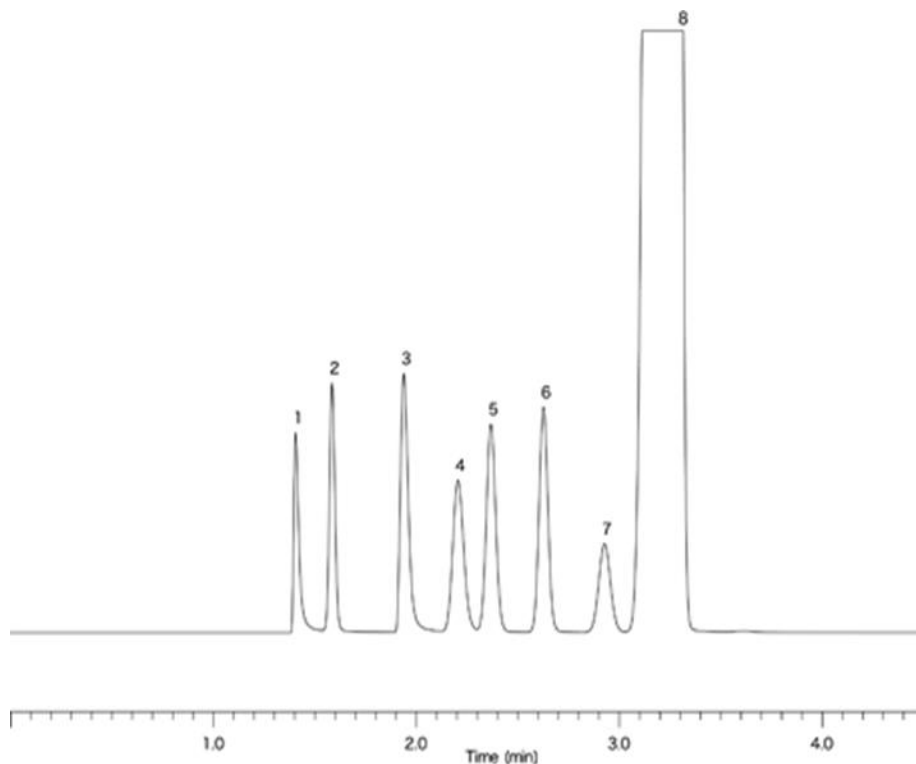


VOC & Amines



System : GC/FID
 Column : InertCap for Amines
 0.32mmI.D. × 15m
 Column Temp. : 40°C
 Carrier Gas : He 30kPa
 Injection : Split 1:50
 Detection : FID

Solutes : 1. Monomethylamine (MMA)
 2. Methanol
 3. Dimethylamine (DMA)
 4. Trimethylamine (TMA)
 5. Ethanol
 6. Acetonitrile
 7. Acetone
 8. iso-Propanol