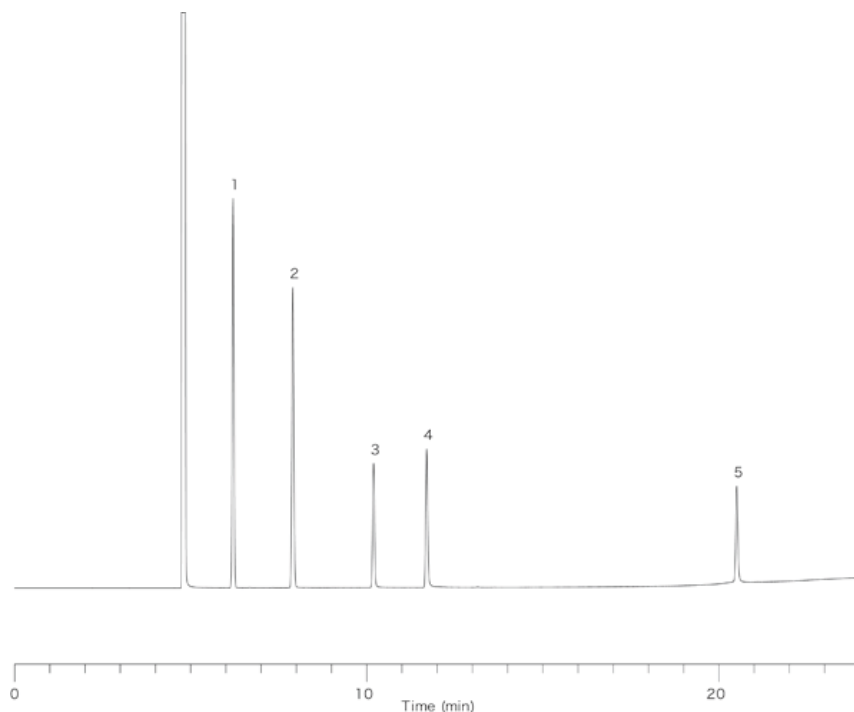


# InertSearch™ for GC

InertCap® Applications

## Amines

Data No. GA067-0000



System : GC/FID  
Column : InertCap for Amines  
0.32mmI.D. × 60m  
Column Temp. : 100°C (5min) → 10°C/min → 250°C (30min)  
Carrier Gas : He 150kPa  
Injection : Split 1 : 50  
Detection : FID  
Sample : Amines

Solutes : 1. iso-propanol  
2. Diethylamine  
3. Ethylene glycol  
4. Monomethylethanolamine  
5. Di-ethylethanolamine