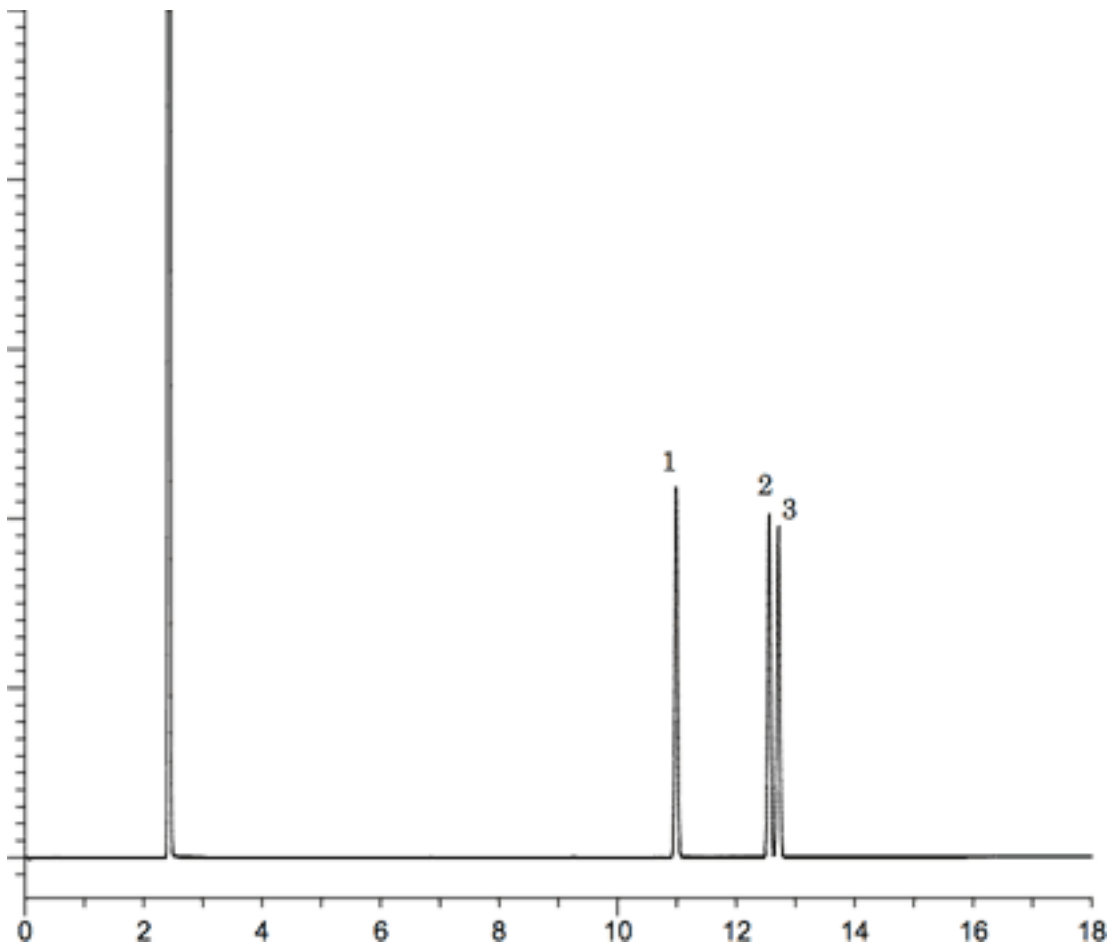


# Isomers of cresol



System	: GC/FID	Solutes	: 1. o-Cresol
Column	: InertCap Pure-WAX 0.25mmI.D. × 30m		2. p-Cresol
Column Temp.	df=0.25µm		3. m-Cresol
Carrier Gas	: 150°C(5min)→5°C/min→250°C		
Injection	: He 100kPa		
	: Split 1 : 50 0.2µl		
Detection	250°C		
	: FID Range 10 <sup>0</sup>		
Sample	260°C		
	: Cresol isomers		