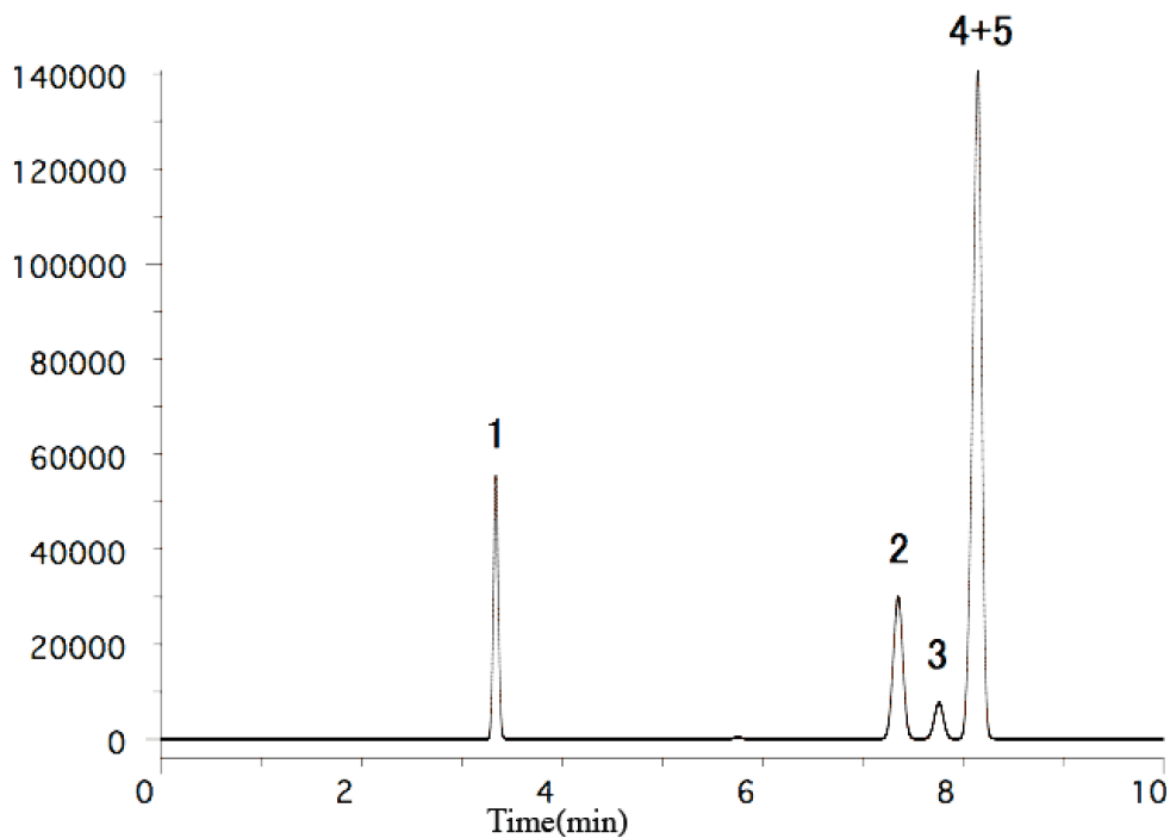


# Residual solvents in pharmaceuticals Class1



System : GC/FID  
 Column : InertCap624  
           0.53mmI.D. × 30m df=3µm  
 Column Temp. : 40°C(5min)–5°C/min–65°C  
 Carrier Gas : He 20kPa 35cm/sec  
 Injection : Split Flow 200ml/min  
           240°C  
 Detection : FID Range10<sup>2</sup>  
           240°C  
 Sample : Solvents  
           Mixed evenly  
 Sample Size : 0.4µL

Solutes 1. 1,1-Dichloroethylene  
           2. 1,1,1-Trichloroethane  
           3. Carbon tetrachloride  
           4. 1,2-Dichloroethane  
           5. Benzene