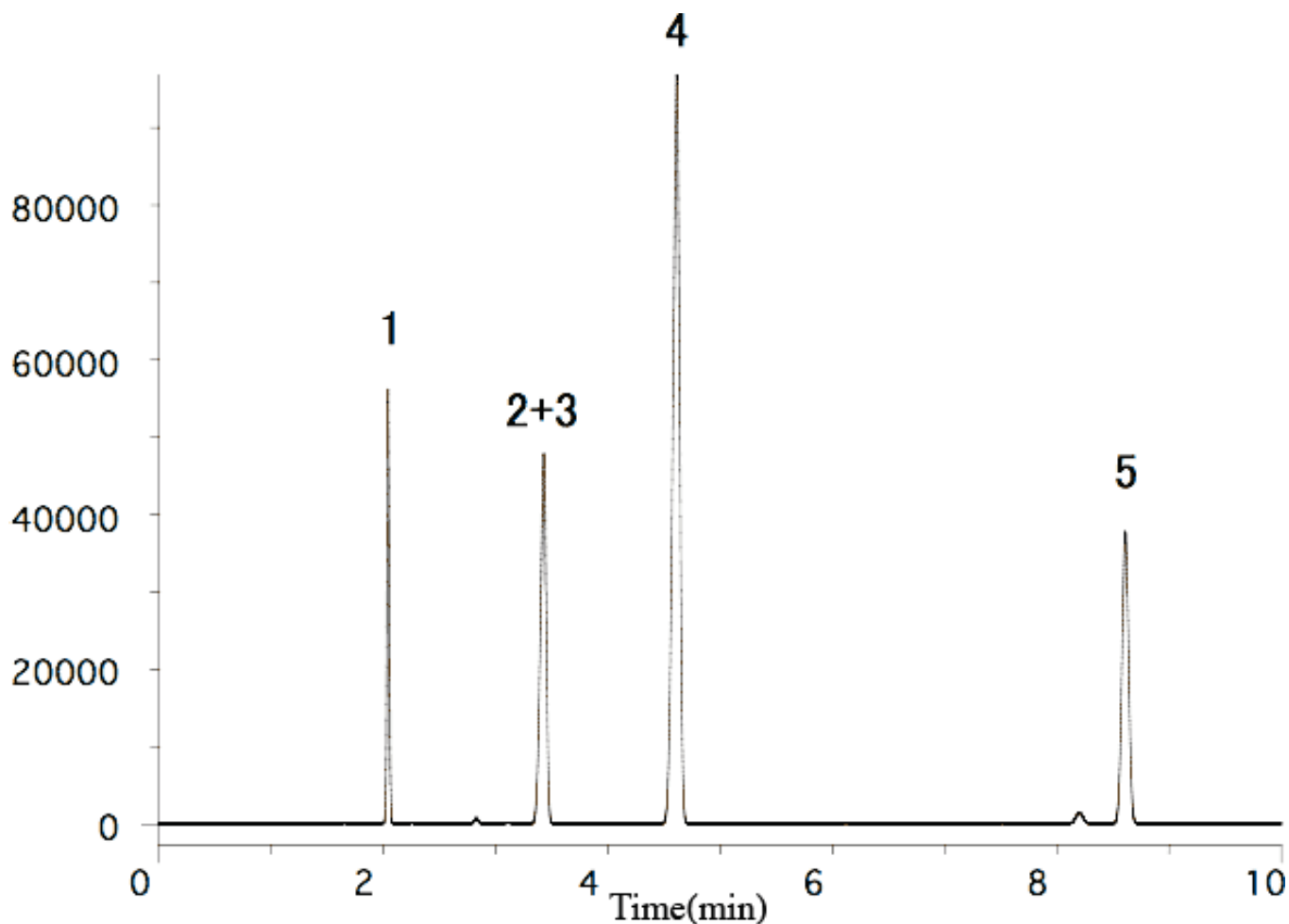


Residual solvents in pharmaceuticals Class1



System : GC/FID
 Column : InertCap Pure-WAX
 0.53mmI.D. × 30m df=1µm
 Column Temp. : 40°C—5°C/min—90°C
 Carrier Gas : He 20kPa 35cm/sec
 Injection : Split Flow 200ml/min
 240°C
 Detection : FID Range102
 240°C
 Sample : Solvents
 Mixed evenly
 Sample Size : 0.4µL

Solutes 1. 1,1-Dichloroethylene
 2. 1,1,1-Trichloroethane
 3. Carbon tetrachloride
 4. Benzene
 5. 1,2-Dichloroethane