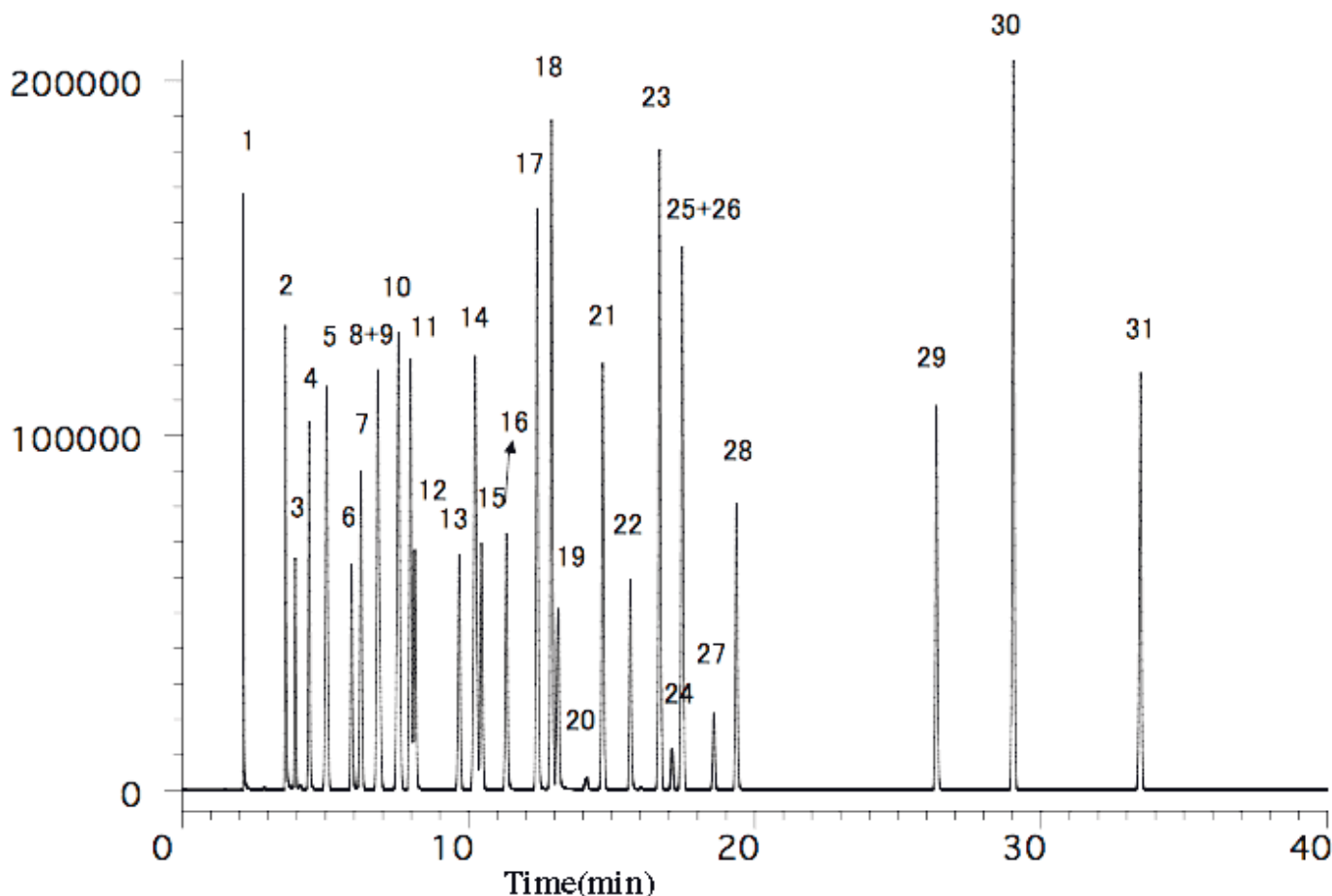


# Residual solvents in pharmaceuticals Class2



System	: GC/FID	Solutes	1. Methanol	17. Pyridine
Column	: InertCap624 0.53mmI.D. × 30m df=3µm	2. Acetonitrile	18. Toluene	19. Ethylene glycol
Column Temp.	: 40°C (5min) – 5°C/min – 215°C	3. Methylene chloride	20. Formamide	21. Methyl butyl ketone
Carrier Gas	: He 20kPa 35cm/sec	4. Trans-1,2-Dichloroethylene	22. N,N-Dimethylformamide	23. Chlorobenzene
Injection	: Split Flow 200ml/min 240°C	5. n-Hexane	24. Ethylbenzene	25. m-Xylene
Detection	: FID Range10 <sup>1</sup> 240°C	6. Nitromethane	26. p-Xylene	27. o-Xylene
Sample	: Solvents Mixed evenly	7. cis-1,2-Dichloroethylene	28. N,N-Dimethylacetamide	29. N-methylpyrrolidone
Sample Size	: 0.4µL	8. Chloroform	30. Tetralin	31. Sulfolane
		9. Tetrahydrofuran		
		10. Cyclohexane		
		11. 2-Methoxyethanol		
		12. 1,2-Dimethoxyethane		
		13. Trichloroethylene		
		14. Methylcyclohexane		
		15. 1,4-Dioxane		
		16. 2-Ethoxyethanol		

Xylene mixture (m-Xylen, p-Xylene, o-Xylene, Ethylbenzene) was used.