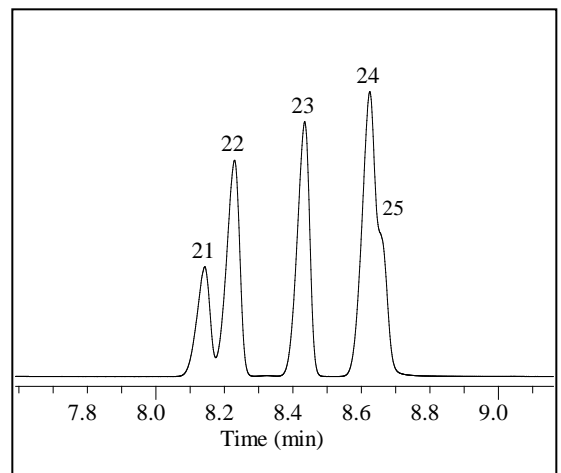
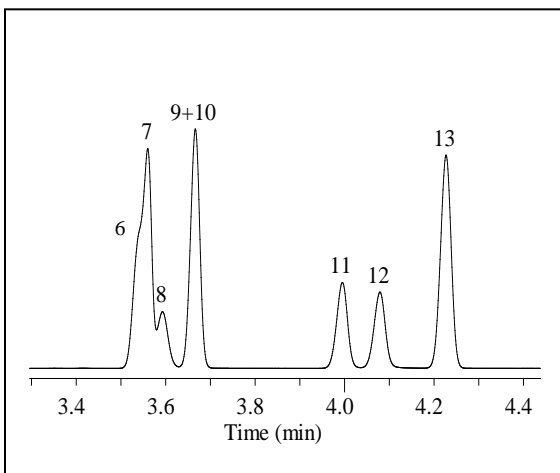
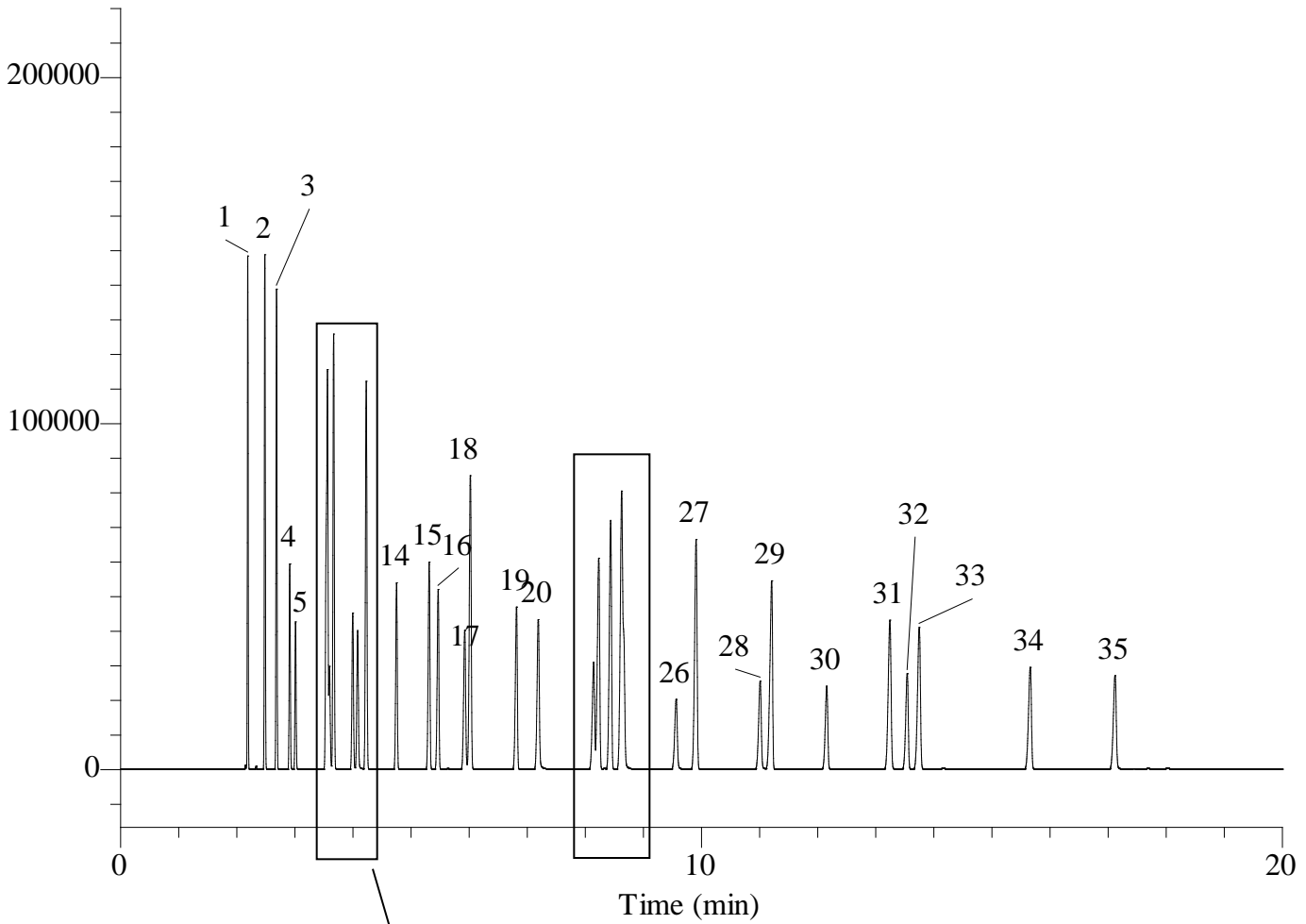


Organic Solvents



Organic Solvents

Conditions

System	: GC/FID
Column	: InertCap Pure-WAX 0.25 mm I.D. x 30 m df = 0.25 µm
Col. Cat. No.	: 1010-68142
Col. Temp.	: 40 °C - 4 °C/min - 200 °C
Carrier Gas	: He 80 kPa
Injection	: Split flow 100 mL/min 200 °C
Detection	: FID Range 10 ¹ 200 °C
Sample Size	: Mixed evenly 0.2 µL

Analyte :

- | | |
|-------------------------------------------|-----------------------------------------------|
| 1. n-Hexane | 21. 1-Methoxy-2-propanol |
| 2. Cyclohexane | (Propylene glycol monomethyl ether) |
| 3. Methylcyclohexane | 22. Ethylbenzene |
| 4. Acetone | 23. p-Xylene |
| 5. Methyl acetate | 24. m-Xylene |
| 6. Ethyl acetate | 25. 1-Butanol |
| 7. Ethylcyclohexane | 26. 2-Methoxyethanol(Methyl cellosolve) |
| 8. Methanol | 27. o-Xylene |
| 9. 2-Butanone(MEK) | 28. 2-Ethoxyethanol(Cellosolve) |
| 10. Isopropyl acetate | 29. 1-Methoxy-2-propyl acetate |
| 11. 2-Propanol(Isopropyl alcohol) | (Propylene glycol monomethyl ether acetate) |
| 12. Ethanol | 30. 2-Methoxyethyl acetate |
| 13. Benzene | (Methyl cellosolve acetate) |
| 14. n-Propyl acetate | 31. Cyclohexanone |
| 15. 4-Methyl-2-pentanone(MIBK) | 32. 2-Ethoxyethyl acetate(Cellosolve acetate) |
| 16. Isobutyl acetate | 33. 2-Methylcyclohexanone |
| 17. 1-Propanol | 34. Diacetone alcohol |
| 18. Toluene | 35. 2-Butoxyethanol(Butyl cellosolve) |
| 19. n-Butyl acetate | |
| 20. 2-Methyl-1-propanol(Isobutyl alcohol) | |