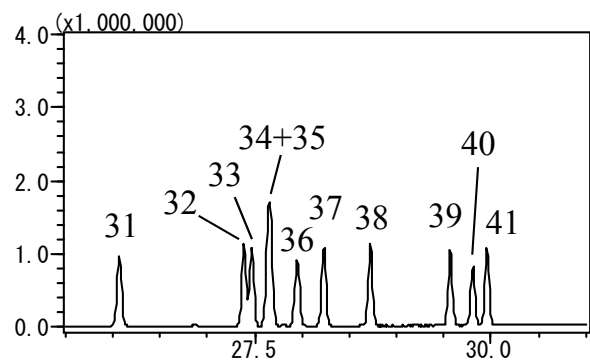
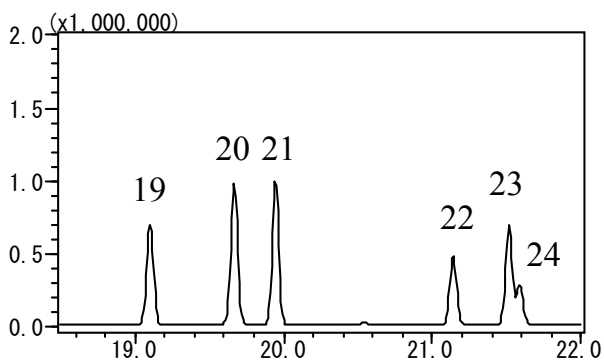
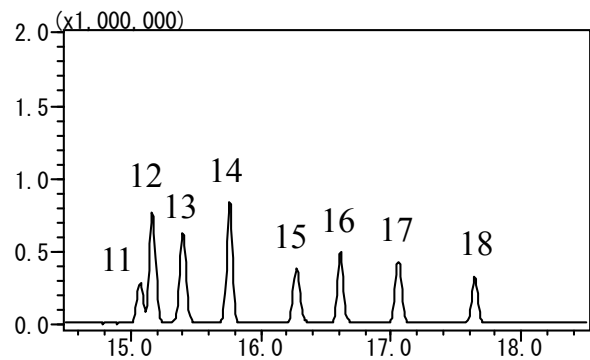
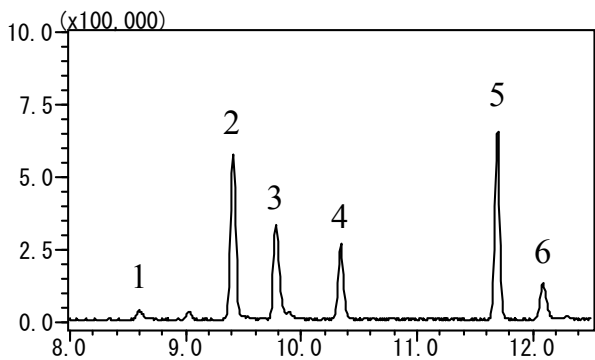
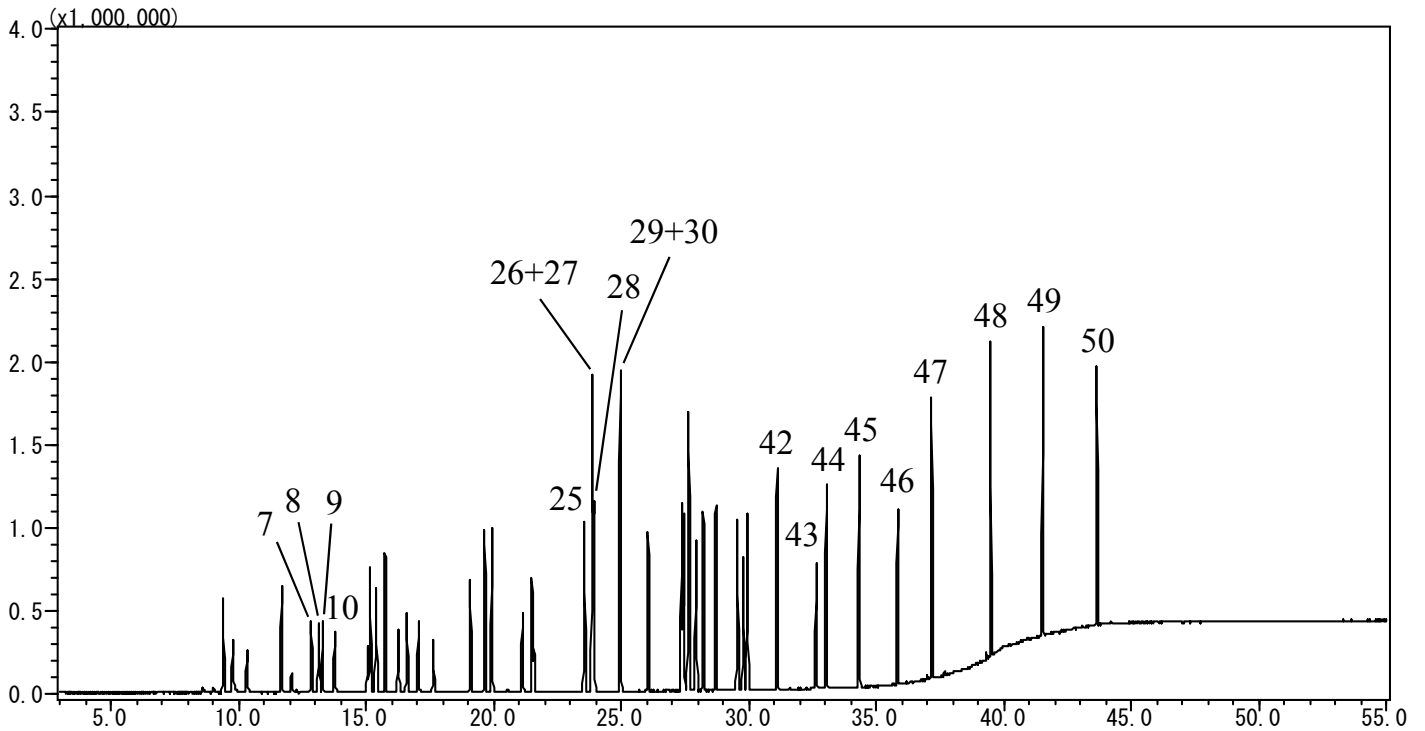


InertSearch™ for GC

InertCap® Applications

Indoor air

Data No. GA106-0644



InertSearch™ for GC

InertCap® Applications

Indoor air

Data No. GA106-0644

Conditions

System : GC/MS Thermal Desorption (T-Dex II)
Column : InertCap 624
0.25 mm I.D. x 60 m df = 1.4 µm
Col. Cat. No. : 1010-14666
Col. Temp. : 40 °C (3 min hold) - 5 °C/min - 200 °C (0 min hold)
- 10 °C/min - 250 °C (18 min hold)
Carrier Gas : He 1mL/min
Injection : Thermal Desorption 270 °C 10 min
Split 1:5
Detection : MS SCAN (35 - 450 m/z)
Interface Temp. 260 °C
Sample Size : 100 µg/mL in Methanol / Water (95 / 5)
1 µL

Analyte :

1. Ethanol	26. m-Xylene
2. Acetone	27. p-Xylene
3. 2-Propanol(Isopropyl alcohol)	28. n-Nonane
4. Dichloromethane	29. o-Xylene
5. n-Hexane	30. Styrene
6. 1-Propanol	31. α-Pinene
7. 2,4-Dimethylpentane	32. 4-Ethyltoluene
8. 2-Butanone(MEK)	33. 3-Ethyltoluene
9. Ethyl acetate	34. 1,3,5-Trimethylbenzene
10. Chloroform	35. n-Decane
11. 1,2-Dichloroethane	36. β-Pinene
12. Benzene	37. 2-Ethyltoluene
13. 2,2,4-Trimethylpentane	38. 1,2,4-Trimethylbenzene
14. n-Heptane	39. o-Xylene
15. 1-Butanol	40. Limonene
16. Trichloroethylene	41. 1,2,3-Trimethylbenzene
17. 1,2-Dichloropropane	42. n-Undecane
18. Bromodichloromethane	43. Nonanal
19. 4-Methyl-2-pentanone (MIBK)	44. 1,2,4,5-Tetramethylbenzene
20. Toluene	45. n-Dodecane
21. n-Octane	46. Decanal
22. Tetrachloroethylene	47. n-Tridecane
23. n-Butyl acetate	48. n-Tetradecane
24. Dibromochloromethane	49. n-Pentadecane
25. Ethylbenzene	50. n-Hexadecane