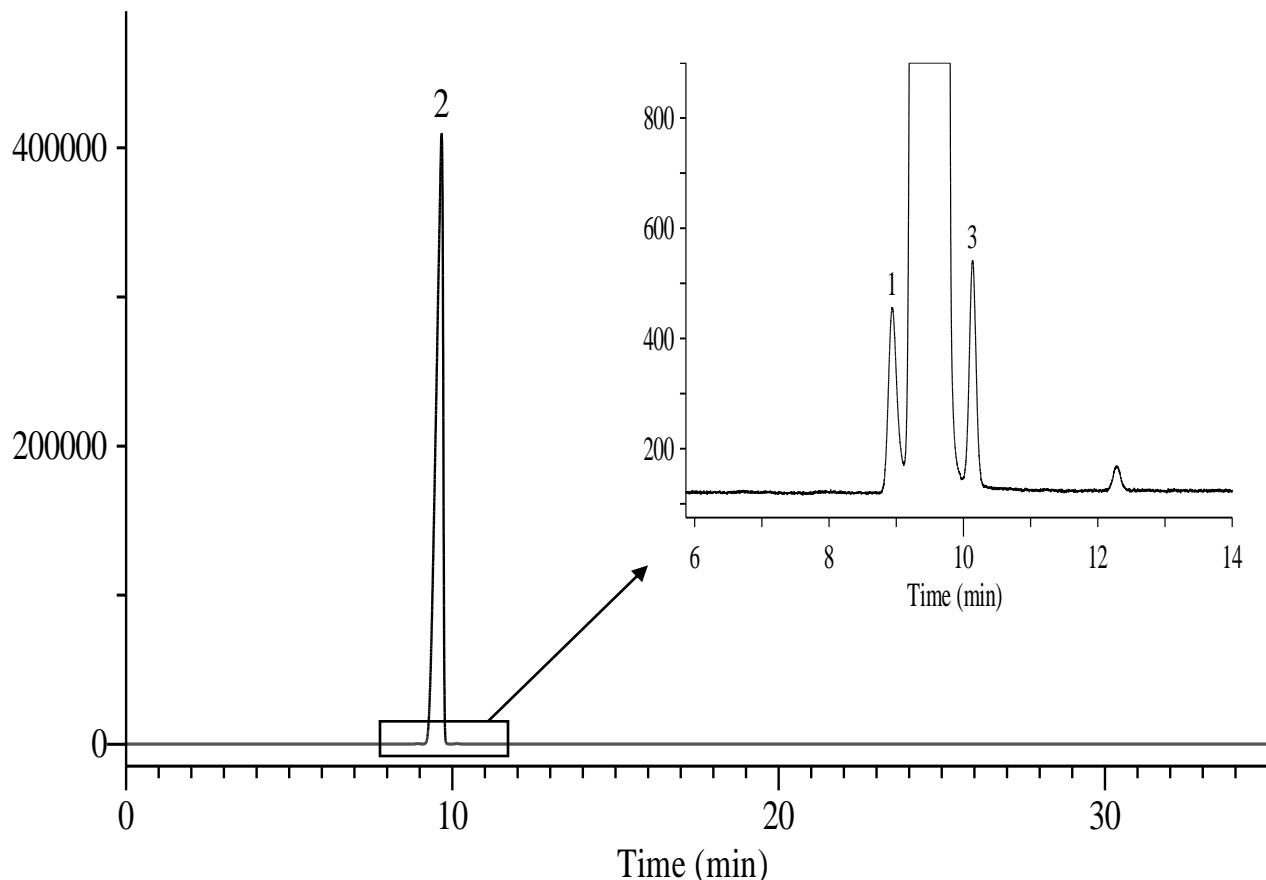


# Cyclohexane

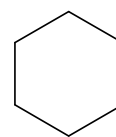
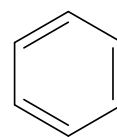


## Conditions

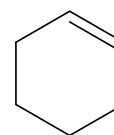
**Analyte** : 1. Benzene  
2. Cyclohexane  
3. Cyclohexene

**System** : GC/FID  
**Column** : InertCap 1  
 0.53 mm I.D. x 30 m df = 5.0 μm  
**Col. Cat. No.** : 1010-11449  
**Col. Temp.** : 40 °C (5 min hold) - 5 °C/min - 190 °C  
**Carrier Gas** : He 25.0 kPa  
**Injection** : Splitless 1 min Vent flow 50 mL/min  
 200 °C  
**Detection** : FID Range 10<sup>3</sup>  
 200 °C  
**Sample Size** : 500 μg/mL in Cyclohexane  
 0.2 μL

## Chemical Structures



1. Benzene    2. Cyclohexane



3. Cyclohexene