

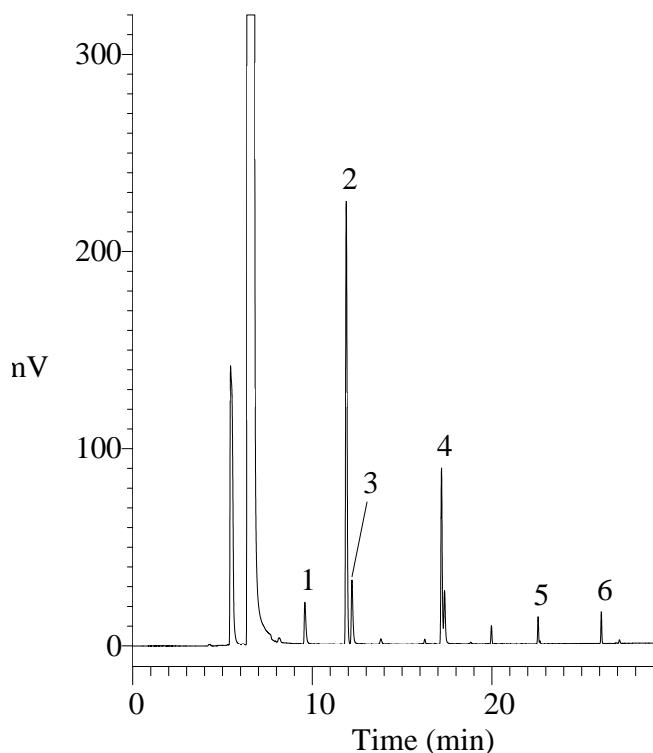
InertSearch™ for GC

InertCap® Applications

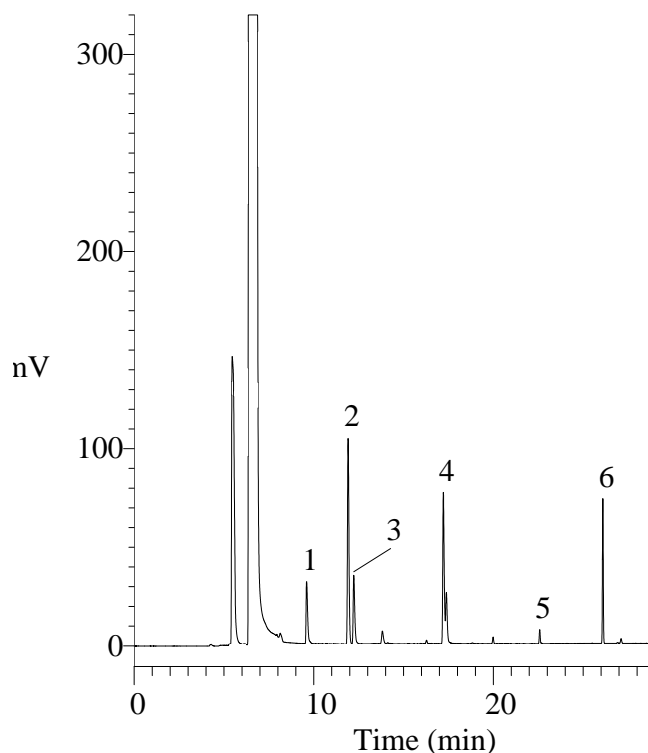
Analysis of Sake

Data No. GA121-0591

Sake 1



Sake 2



Conditions

System : GC/FID Headspace Gas(HT3)
Column : InertCap AQUATIC
0.32 mm I.D. x 60 m df = 1.4 µm
Col. Cat. No. : 1010-29266
Col. Temp. : 40 °C (5 min hold) - 5 °C/min - 100 °C
- 10 °C/min - 200 °C (13 min hold)
Carrier Gas : He 100 kPa
Injection : Direct
Detection : FID Range 10⁰
220 °C
Sample Size : Headspace Gas 1 mL
Sake 5 mL in Vial (22 mL)
80 °C 30 min

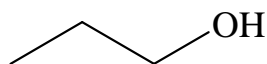
Analyte

1. 1-Propanol
2. Ethyl acetate
3. 2-Methyl-1-propanol
(Isobutyl alcohol)
4. 3-Methyl-1-butanol
(Isoamyl alcohol)
5. Isopentyl acetate
(Isoamyl acetate)
6. Ethyl hexanoate

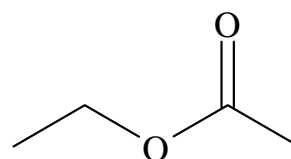
Analysis of Sake

Data No. GA121-0591

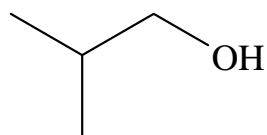
Chemical Structure



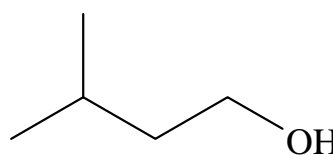
1. 1-Propanol



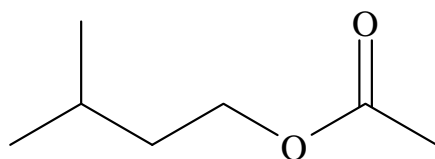
2. Ethyl acetate



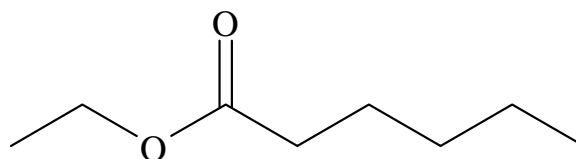
3. 2-Methyl-1-propanol
(Isobutyl alcohol)



4. 3-Methyl-1-butanol
(Isoamyl alcohol)



5. Isopentyl acetate
(Isoamyl acetate)



6. Ethyl hexanoate

Structures are created using Chemistry 4-D Draw which is provided by ChemInnovayion Software, Inc.