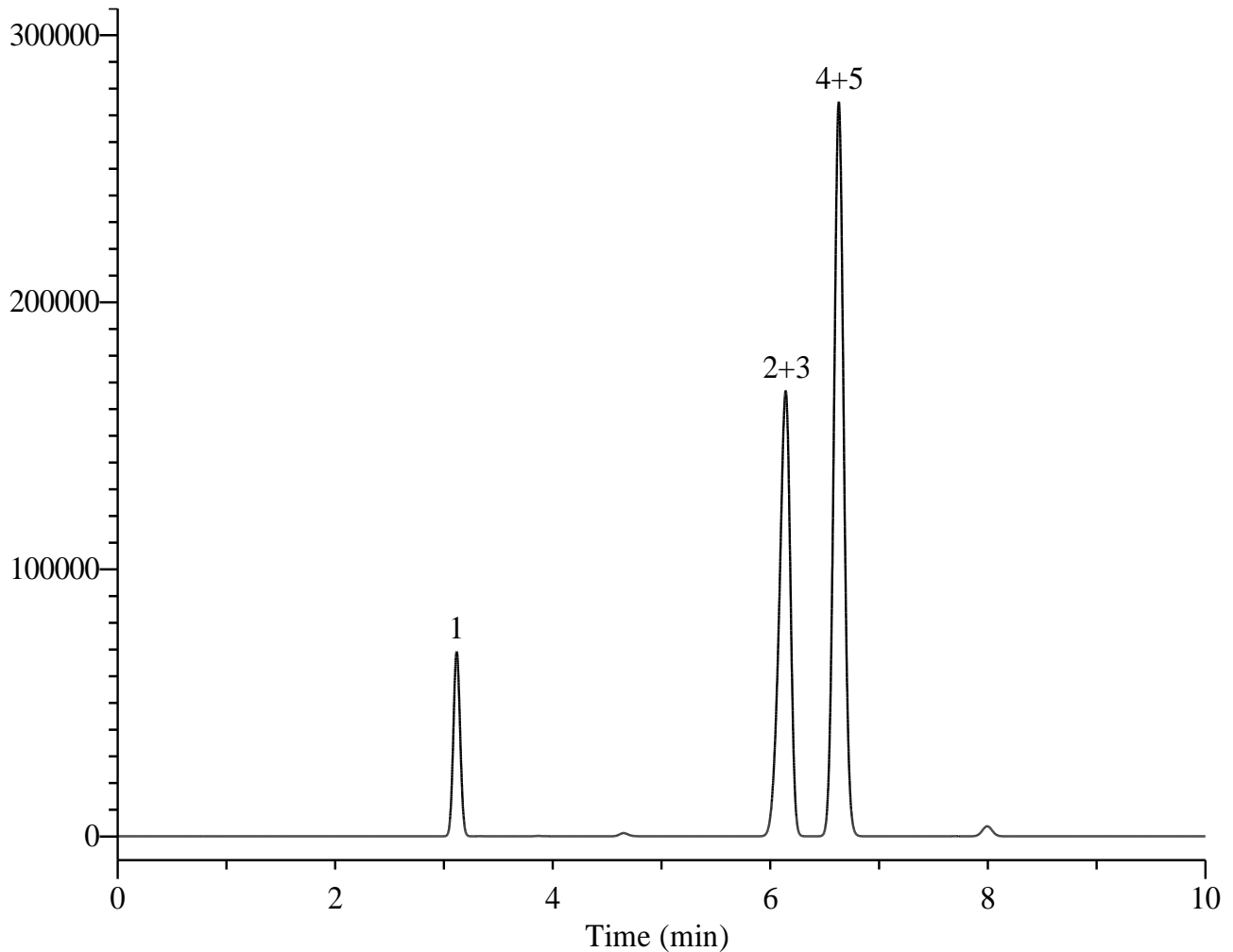


Residual solvents in pharmaceuticals Class1



Conditions

System	: GC/FID	Analyte	:
Column	: InertCap 5 0.53 mm I.D. x 30 m df = 5.0 µm	1.	1,1-Dichloroethylene
Col. Cat. No.	: 1010-18449	2.	1,1,1-Trichloroethane
Col. Temp.	: 40 °C - 5 °C/min - 90°C	3.	1,2-Dichloroethane
Carrier Gas	: He 20 kPa	4.	Benzene
Injection	: Split flow 200 mL/min 240 °C	5.	Carbon tetrachloride
Detection	: FID Range 10 ² 240 °C		
Sample Size	: Mixed evenly 0.5 µL		