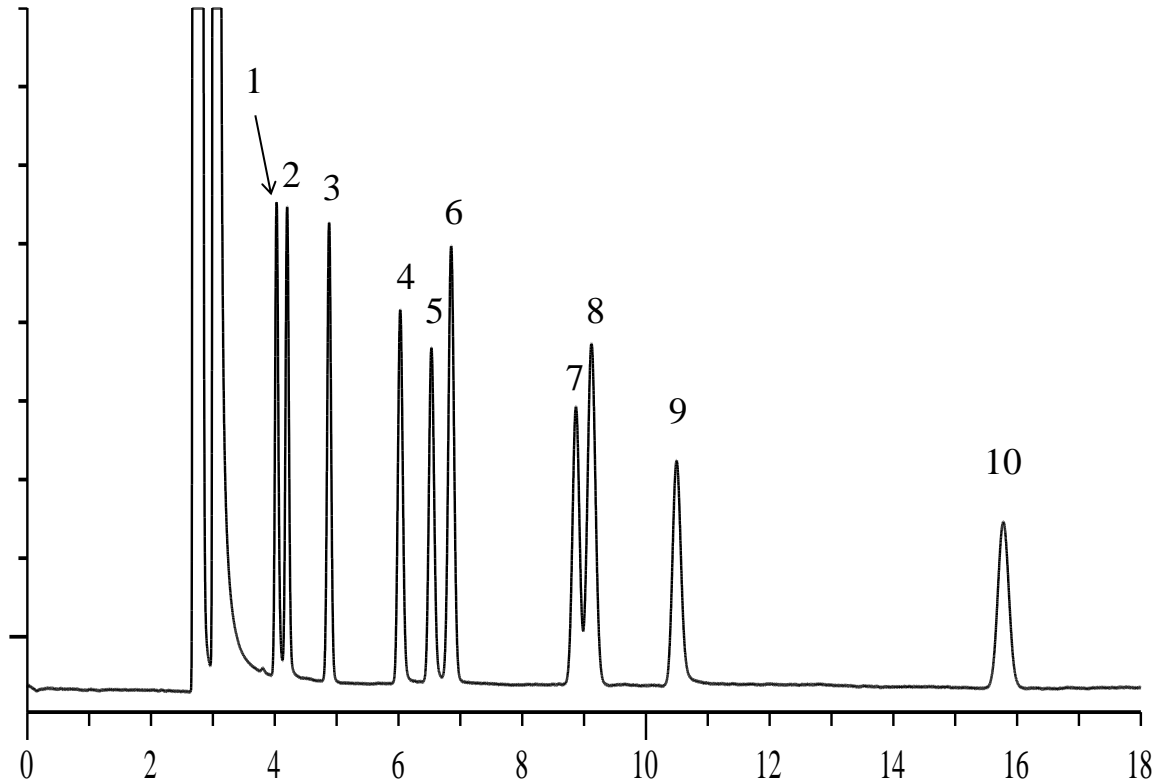


Solvents



Conditions

System : GC/HID
Column : InertCap 1
 0.53 mm I.D. x 30 m df = 5.00 μm
Col. Cat. No. : 1010-11449
Col. Temp. : 80 °C
Carrier Gas : He 20 kPa
Injection : Split flow 15 mL/min
 200 °C
Detection : PDD-HID mode
 Discharge Gas Inlet He 30 mL/min
 200 °C
Sample Size : 200-500ppm in Air
 200 μL

Analyte:

1. Acetonitrile
2. Acetone
3. Dichloromethane
4. 2-Hexanone (MEK)
5. Ethyl acetate
6. Chloroform
7. Benzene
8. Carbon tetrachloride
9. 1,4-Dioxane
10. Toluene