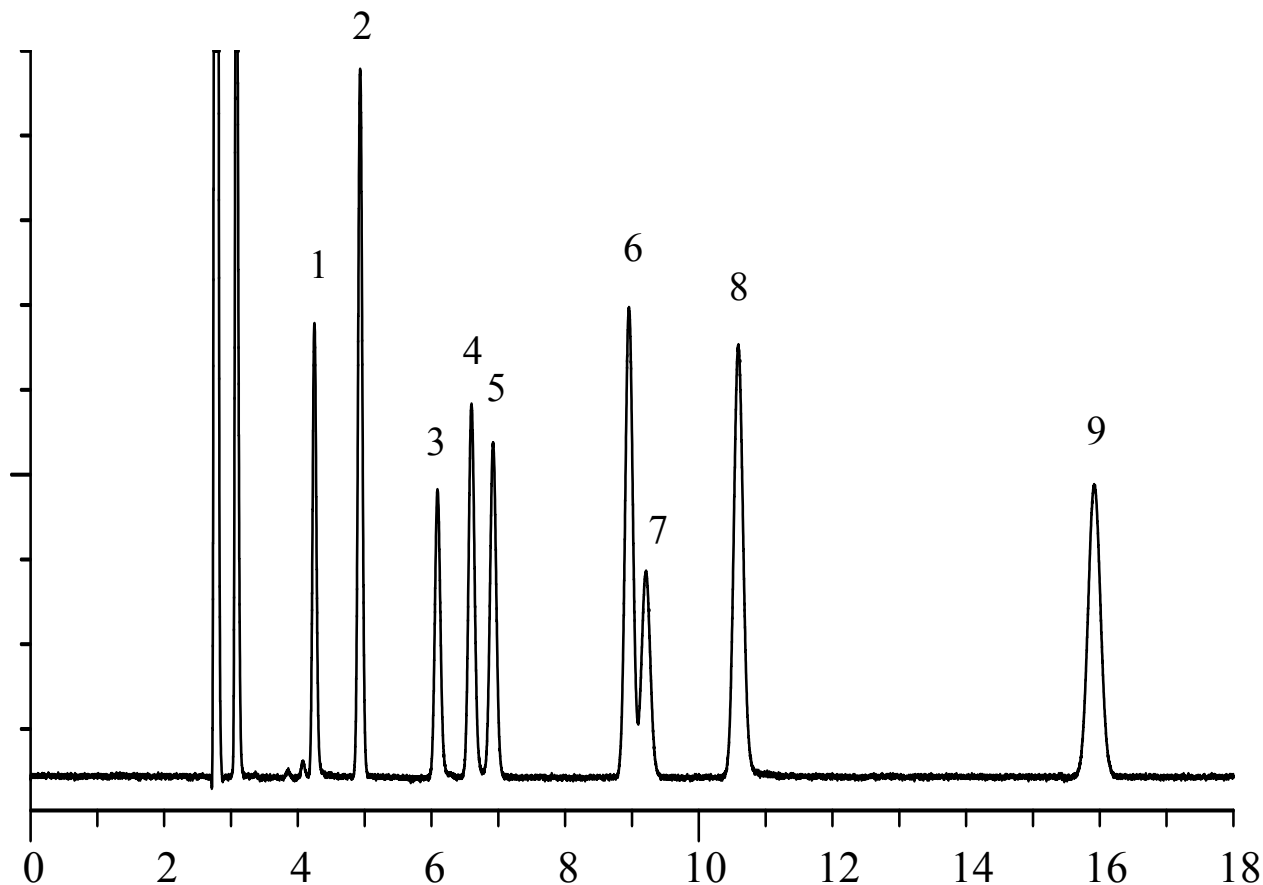


# InertSearch™ for GC

InertCap® Applications

## Solvents

Data No. GA133-0410



### Conditions

**System** : GC/PID  
**Column** : InertCap 1  
0.53 mm I.D. x 30 m df = 5.00  $\mu$ m  
**Col. Cat. No.** : 1010-11449  
**Col. Temp.** : 80 °C  
**Carrier Gas** : He 20 kPa  
**Injection** : Split flow 15 mL/min  
200 °C  
**Detection** : PDD/PID mode  
Discharge Gas Inlet 2%Ar/He 30 mL/min  
200 °C  
**Sample Size** : 200-500ppm in Air  
200  $\mu$ L

### Analyte:

1. Acetone
2. Dichloromethane
3. 2-Hexanone (MEK)
4. Ethyl acetate
5. Chloroform
6. Benzene
7. Carbon tetrachloride
8. 1,4-Dioxane
9. Toluene