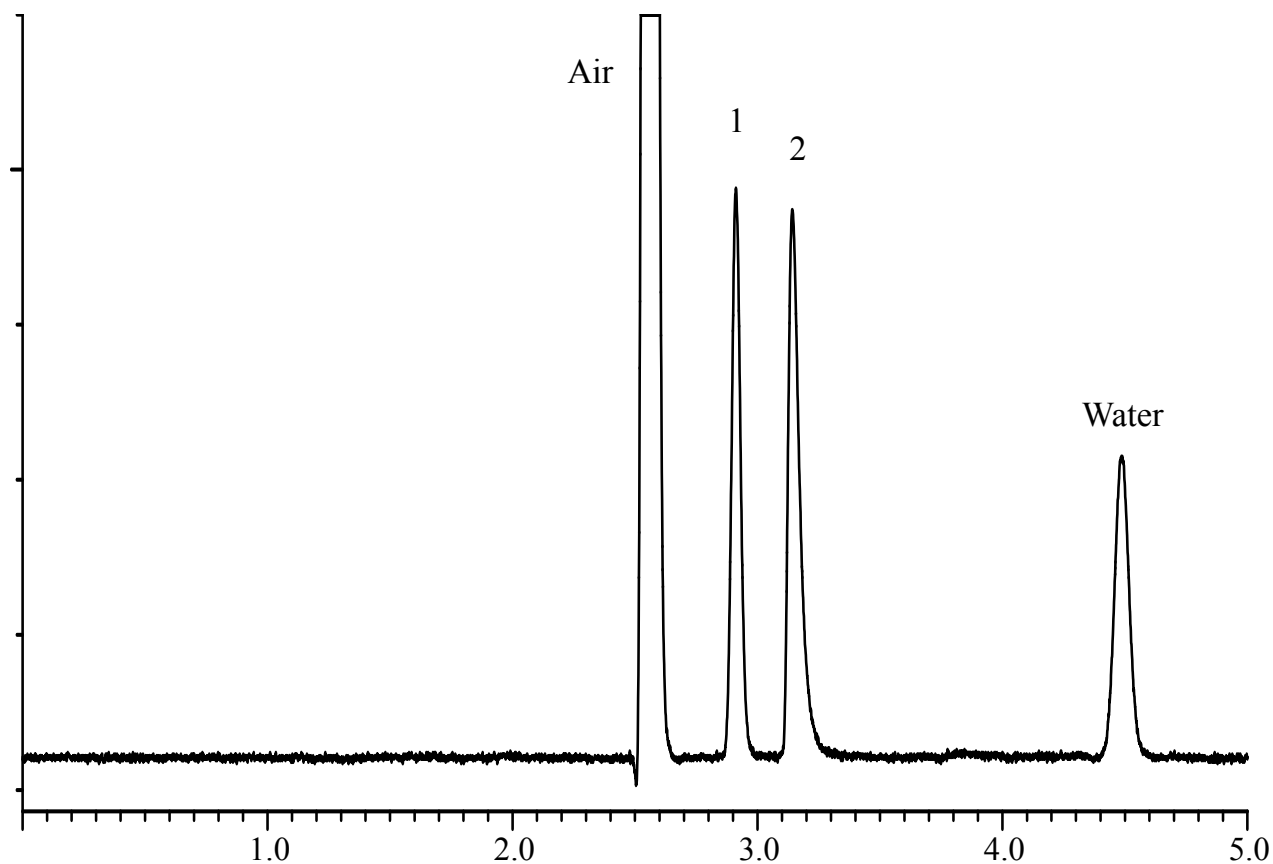


# InertSearch™ for GC

InertCap® Applications

## Sulfur compounds

Data No. GA142-0410



### Conditions

**System** : GC/PID  
**Column** : InertCap 1  
0.53 mm I.D. x 30 m df = 5.00 µm  
**Col. Cat. No.** : 1010-11449  
**Col. Temp.** : 40 °C  
**Carrier Gas** : He 20 kPa  
**Injection** : Split flow 15 mL/min  
200 °C  
**Detection** : PDD/PID mode Range 1x  
Discharge Gas Inlet 2%Ar/He 30 mL/min  
200 °C  
**Sample Size** : Analytes in Air  
200 µL

### **Analyte:**

1. Hydrogen sulfide 12 ppm  
2. Methyl mercaptan 11 ppm