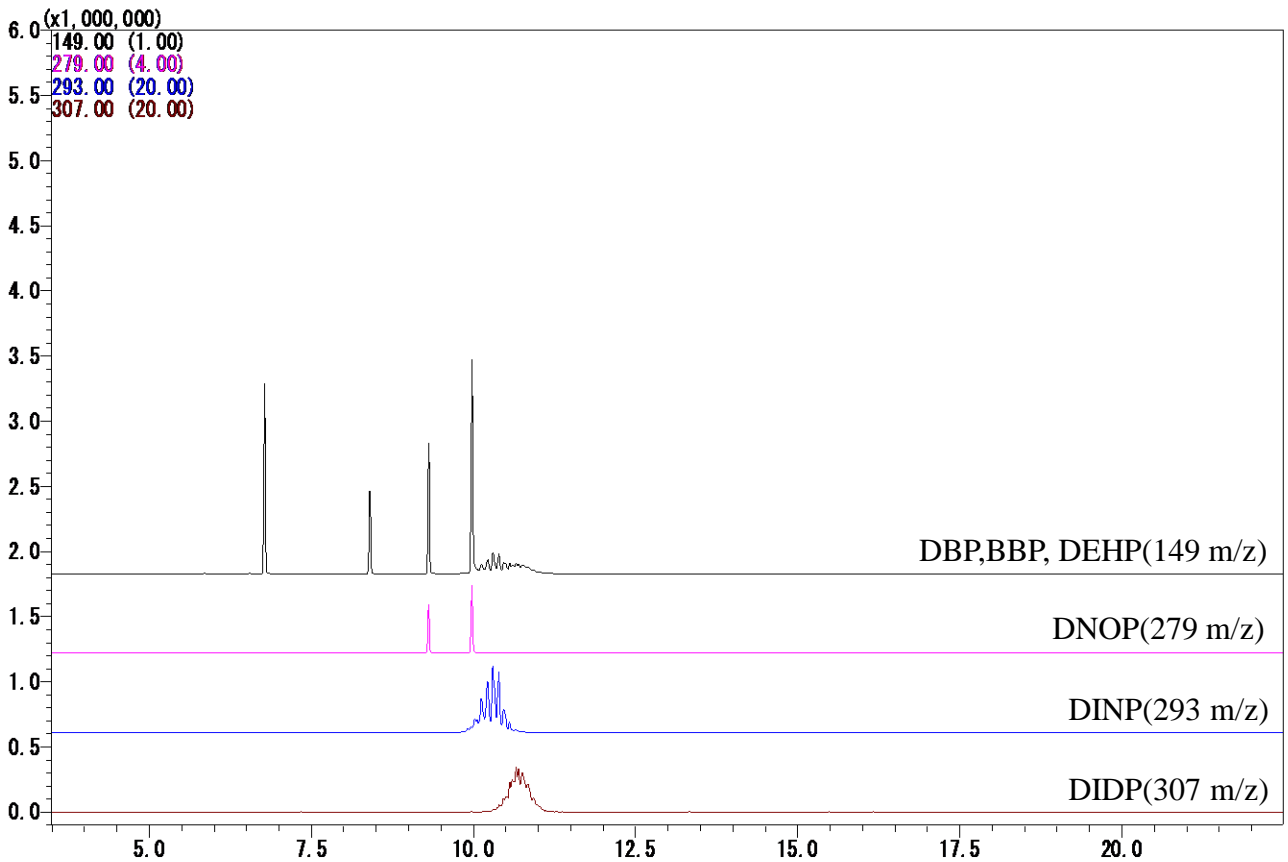
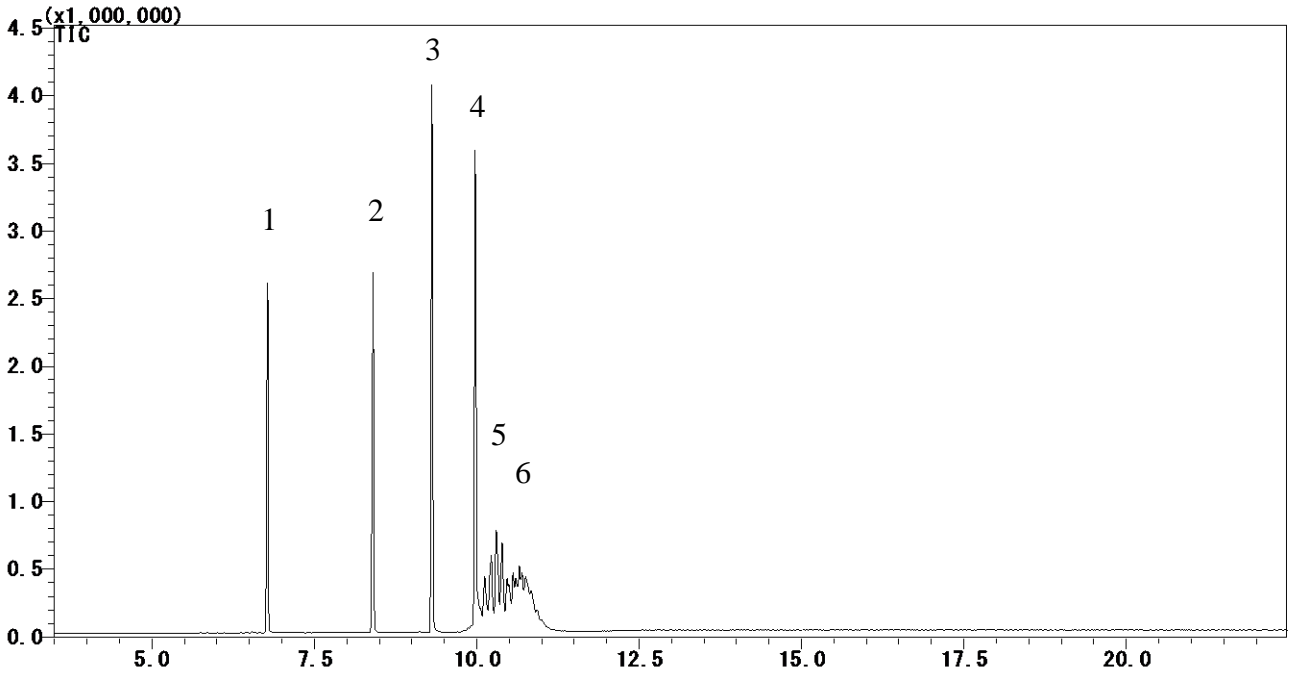


Phthalic acid esters



Phthalic acid esters

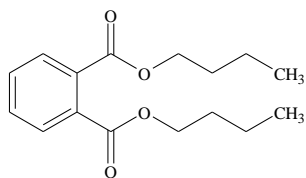
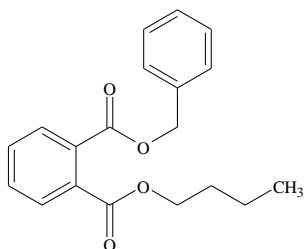
Conditions

System	: GC/MS
Column	: InertCap 1MS (Tailor-made column) 0.25 mm I.D. x 15 m df = 0.10 μ m
Col. Temp.	: 50 $^{\circ}$ C - 20 $^{\circ}$ C/min - 300 $^{\circ}$ C
Carrier Gas	: He 60 cm/sec
Injection	: Split flow 54.3 mL/min 280 $^{\circ}$ C
Detection	: MS Scan (45 - 500 m/z) Interface Temp. 300 $^{\circ}$ C
Sample Size	: 1000 μ g/mL in Hexane 1.0 μ L

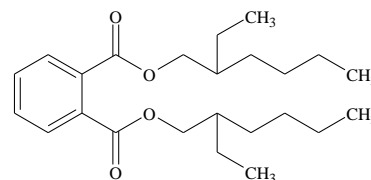
Analyte :

1. Di-*n*-butyl phthalate (DBP)
2. Benzyl butyl phthalate (BBP)
3. Di(2-ethylhexyl) phthalate (DEHP)
4. Di-*n*-octyl phthalate (DNOP)
5. Diisononyl phthalate (DINP)
6. Diisodecyl phthalate (DIDP)

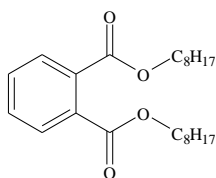
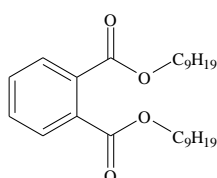
Chemical Structure


 1. Di-*n*-butyl phthalate


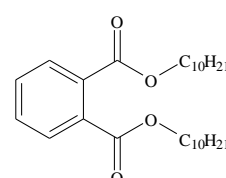
2. Benzyl butyl phthalate



3. Di(2-ethylhexyl) phthalate


 4. Di-*n*-octyl phthalate


5. Diisononyl phthalate



6. Diisodecyl phthalate