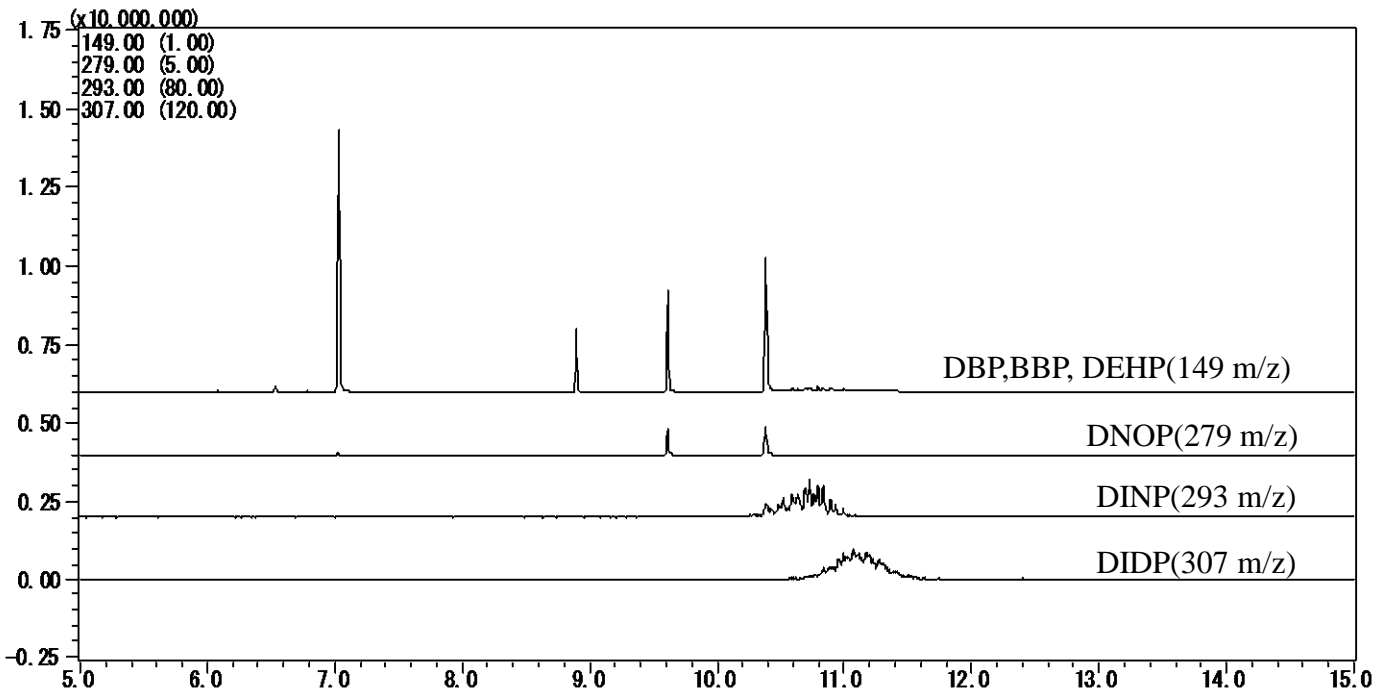
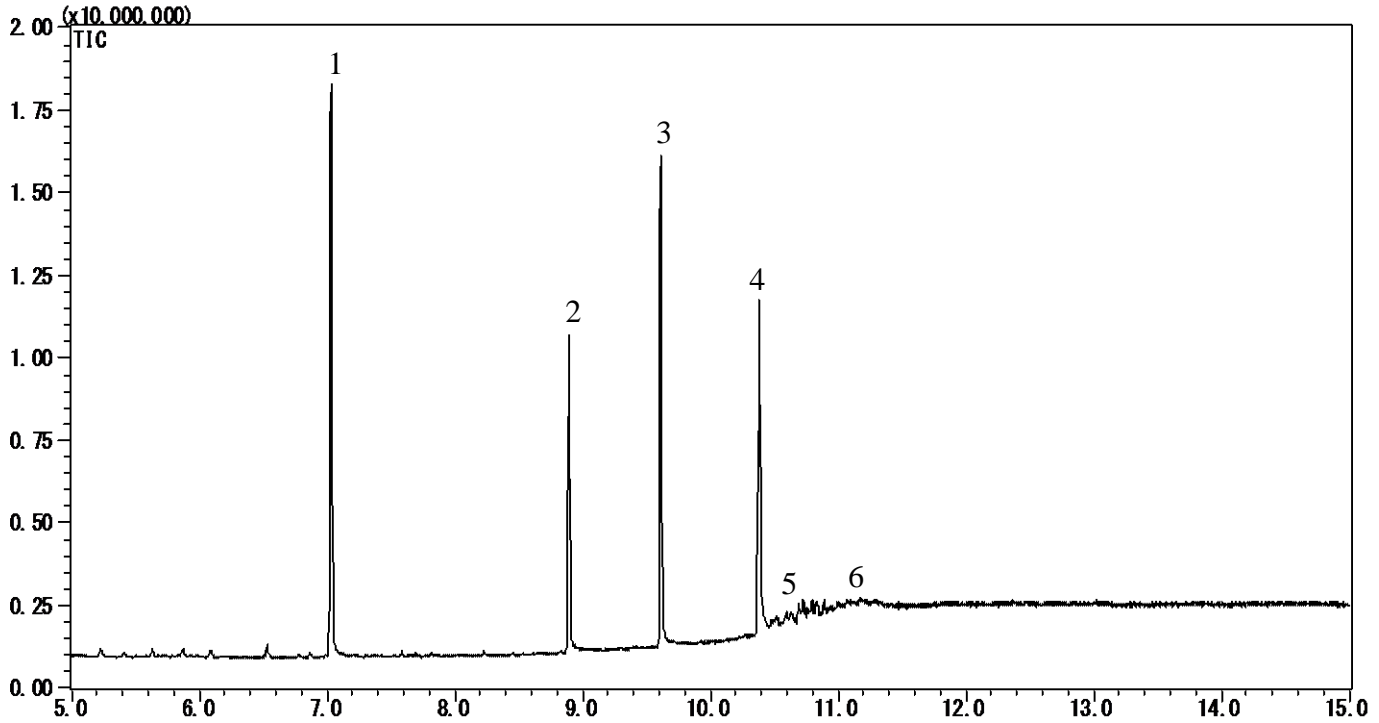


# Phthalic acid esters



## Phthalic acid esters

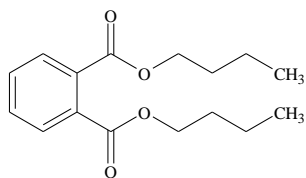
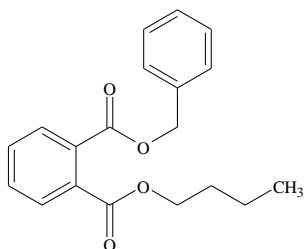
### Conditions

<b>System</b>	: GC/MS
<b>Column</b>	: InertCap 5MS/Sil 0.25 mm I.D. x 30 m df = 0.25 $\mu$ m
<b>Col. Cat. No.</b>	: 1010-15142
<b>Col. Temp.</b>	: 50 $^{\circ}$ C - 20 $^{\circ}$ C/min - 300 $^{\circ}$ C
<b>Carrier Gas</b>	: He 4.0 mL/min
<b>Injection</b>	: Splitless 2 min Vent flow 25 mL/min 280 $^{\circ}$ C
<b>Detection</b>	: MS Scan (30 - 400 m/z) Interface Temp. 300 $^{\circ}$ C
<b>Sample Size</b>	: 5.0 $\mu$ g/mL in Hexane 1.0 $\mu$ L

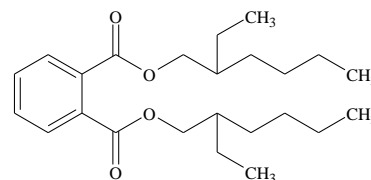
### Analyte :

1. Di-*n*-butyl phthalate (DBP)
2. Benzyl butyl phthalate (BBP)
3. Di(2-ethylhexyl) phthalate (DEHP)
4. Di-*n*-octyl phthalate (DNOP)
5. Diisononyl phthalate (DINP)
6. Diisodecyl phthalate (DIDP)

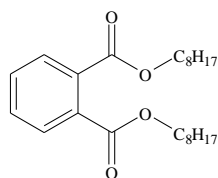
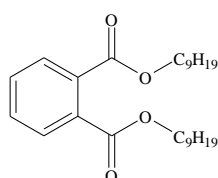
### Chemical Structure


 1. Di-*n*-butyl phthalate


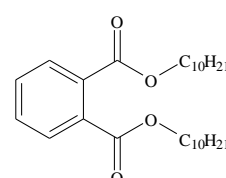
2. Benzyl butyl phthalate



3. Di(2-ethylhexyl) phthalate


 4. Di-*n*-octyl phthalate


5. Diisononyl phthalate



6. Diisodecyl phthalate