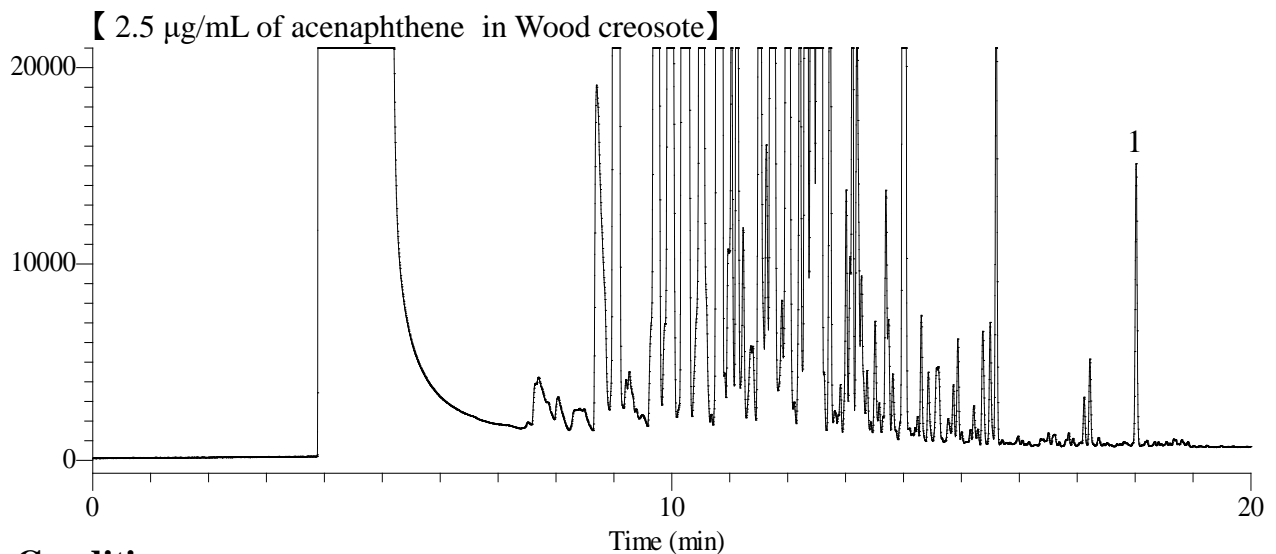
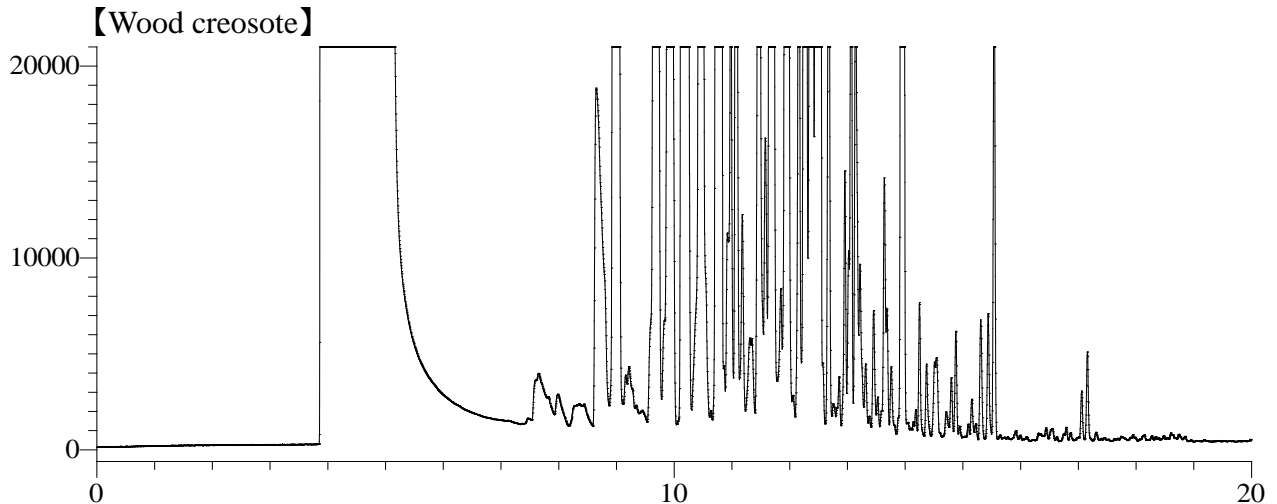


Purity test of Wood Creosote by Japanese pharmacopoeia



Conditions

- System** : GC/FID
- Column** : InertCap 1
0.25 mm I.D. x 60 m df = 0.25 µm
- Col. Cat. No.** : 1010-11162
- Col. Temp.** : 45 °C - 11.5 °C/min - 160 °C - 4 °C/min - 180 °C - 8 °C/min - 270 °C(3 min hold)
- Carrier Gas** : He 220 kPa
- Injection** : Splitless 1 min Vent flow 20 mL/min
250 °C
- Detection** : FID Range 10⁰
250 °C
- Sample Size** : 2.4 mg/mL in Methanol
1.0 µL
- Analyte** : 1. Acenaphthene 2.5 µg/mL