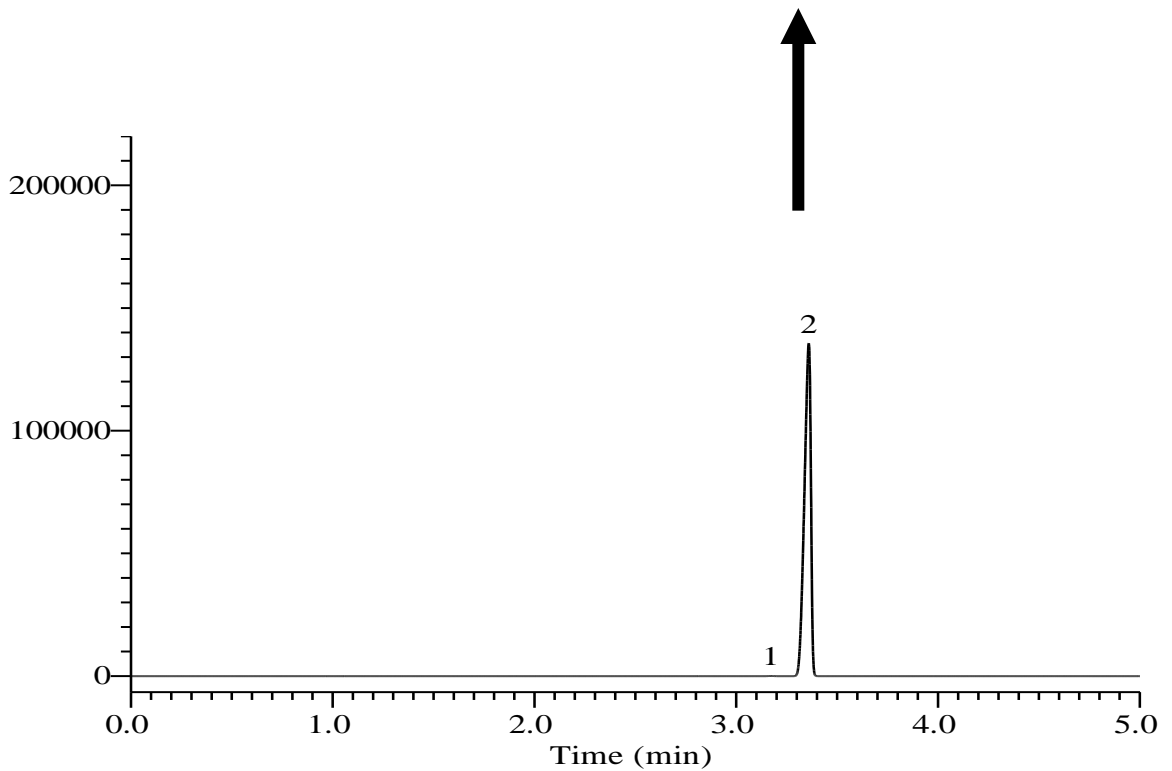
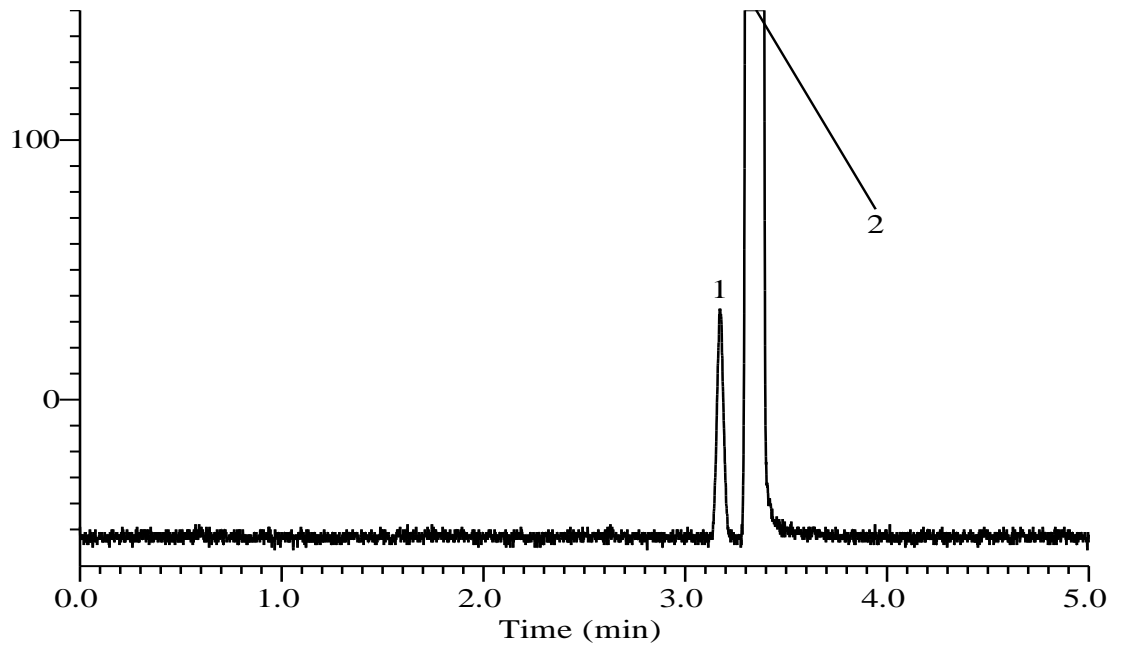


## Impurities in 2-Propanol (Isopropyl alcohol)



## Impurities in 2-Propanol (Isopropyl alcohol)

### Conditions

<b>System</b>	: GC/FID
<b>Column</b>	: InertCap WAX 0.25 mm I.D. x 30 m df = 0.25 $\mu$ m
<b>Col. Cat. No.</b>	: 1010-67142
<b>Col. Temp.</b>	: 70 °C
<b>Carrier Gas</b>	: He 70 kPa
<b>Injection</b>	: Split flow 180 mL/min 150 °C
<b>Detection</b>	: FID Range 10 <sup>2</sup> 150 °C
<b>Sample Size</b>	: 1 mg/mL in 2-Propanol 0.5 $\mu$ L

### Analyte

1. Methanol
2. 2-Propanol (Isopropyl alcohol)