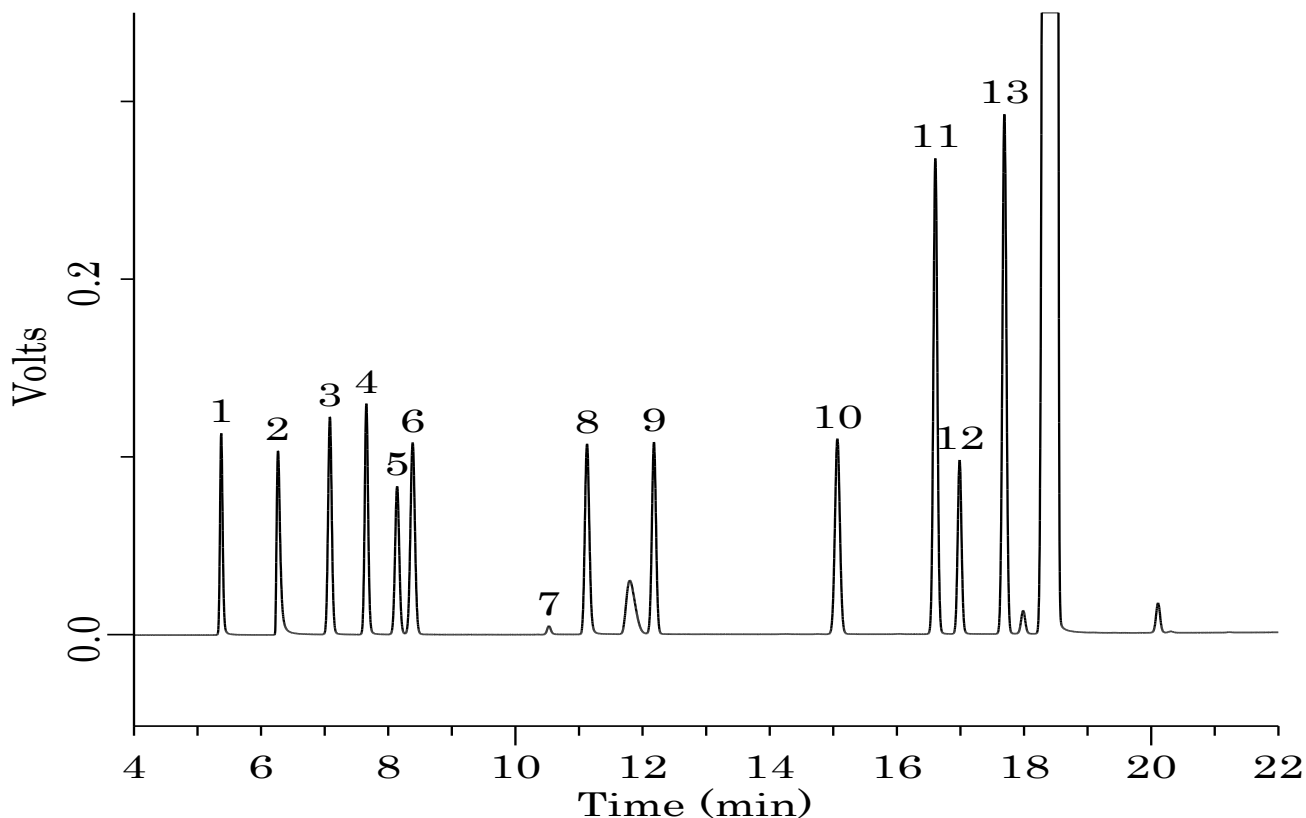


## Amines and Solvents



### Conditions

**System** : GC/FID  
**Column** : InertCap for Aminines  
 0.32 mm I.D. x 60 m  
**Col.Cat. No.** : 1010-69269  
**Col. Temp.** : 50 °C (3 min hold) - 10 °C/min -  
 220 °C (5 min hold)  
**Carrier Gas** : He 150 kPa  
**Injection** : Split 1:50  
 260 °C  
**Detection** : FID  
 250 °C  
**Sample Size** : 5000mg/L in Dimethyl sulfoxide  
 0.2µL

### Analyte:

1. Methanol  
 2. Dimethylamine (DMA)  
 3. Ethanol  
 4. Acetonitrile  
 5. Acetone  
 6. 2-Propanol (Isopropyl alcohol)  
 7. Acetic acid  
 8. Diethylamine  
 9. Ethyl acetate  
 10. Triethylamine  
 11. Pyridine  
 12. *N,N*-Dimethylformamide  
 13. Toluene