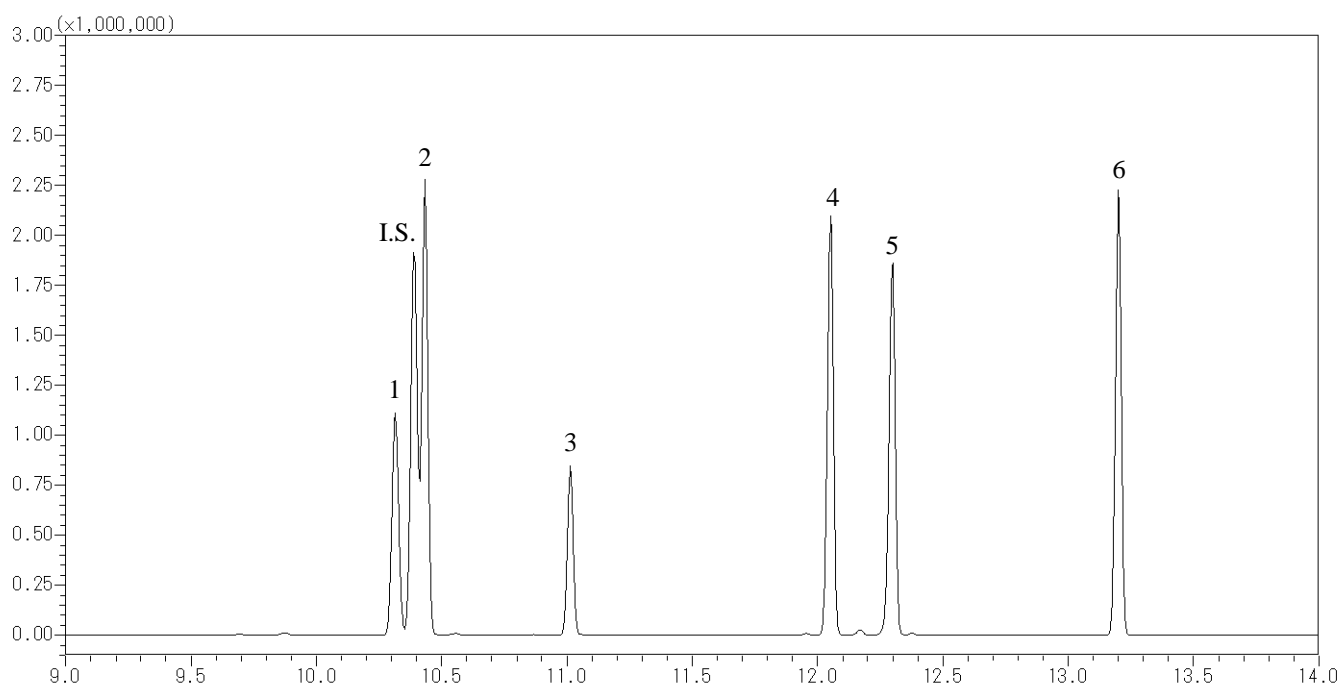


## Aromatic compounds



### Conditions

**System** : GC/MS  
**Column** : InertCap 5MS  
           0.25 mm I.D. x 30 m df = 0.25 µm  
**Col.Cat. No.** : 1010-18642  
**Col. Temp.** : 40 °C(1 min hold) - 10 °C/min - 250 °C  
**Carrier Gas** : He 36.5 cm/sec  
**Injection** : Splitless 1min  
           250 °C  
**Detection** : MS Scan (35 – 400 m/z)  
           Interface Temp. 250 °C  
**Sample Size** : 10 µg/mL in Dichloromethane  
           1 µL

### Analyte :

1. 1,2,4-Trichlorobenzene  
 2. Naphthalene  
 3. Benzotrichloride  
 4. 2-Methylnaphthalene  
 5. 1-Methylnaphthalene  
 6. Biphenyl  
 I.S. Naphthalene-d8