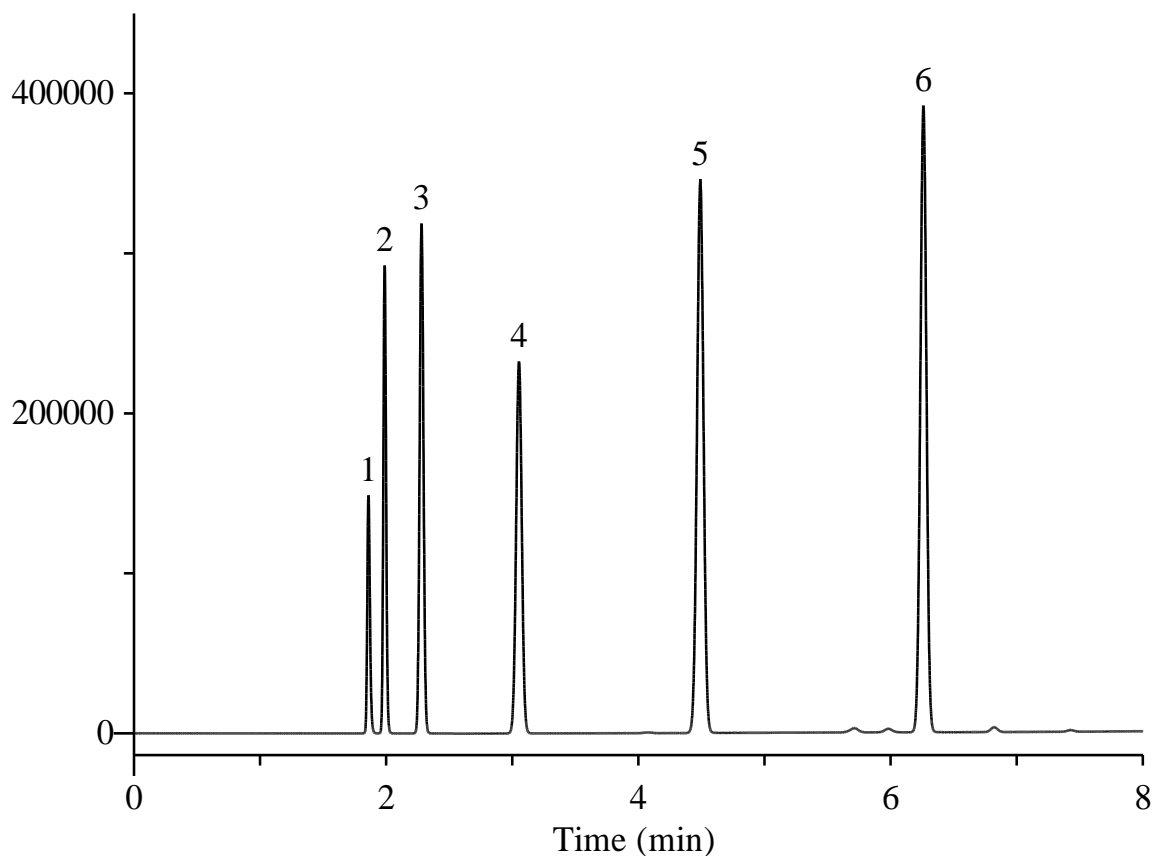


## Hydrocarbons C1-C6



### Conditions

**System** : GC/FID  
**Column** : InertCap 1  
 0.53 mm I.D. x 30 m df = 5.00  $\mu$ m  
**Col. Cat. No.** : 1010-11449  
**Col. Temp.** : 40 °C (5 min hold) - 10 °C/min - 100 °C  
**Carrier Gas** : He 20 kPa  
**Injection** : Split flow 20 mL/min  
 250 °C  
**Detection** : FID Range  $10^0$   
 250 °C  
**Sample Size** : 0.1 vol. % in N<sub>2</sub>  
 100  $\mu$ L

### Analyte

1. Methane  
 2. Ethane  
 3. Propane  
 4. *n*-Butane  
 5. *n*-Pentane  
 6. *n*-Hexane