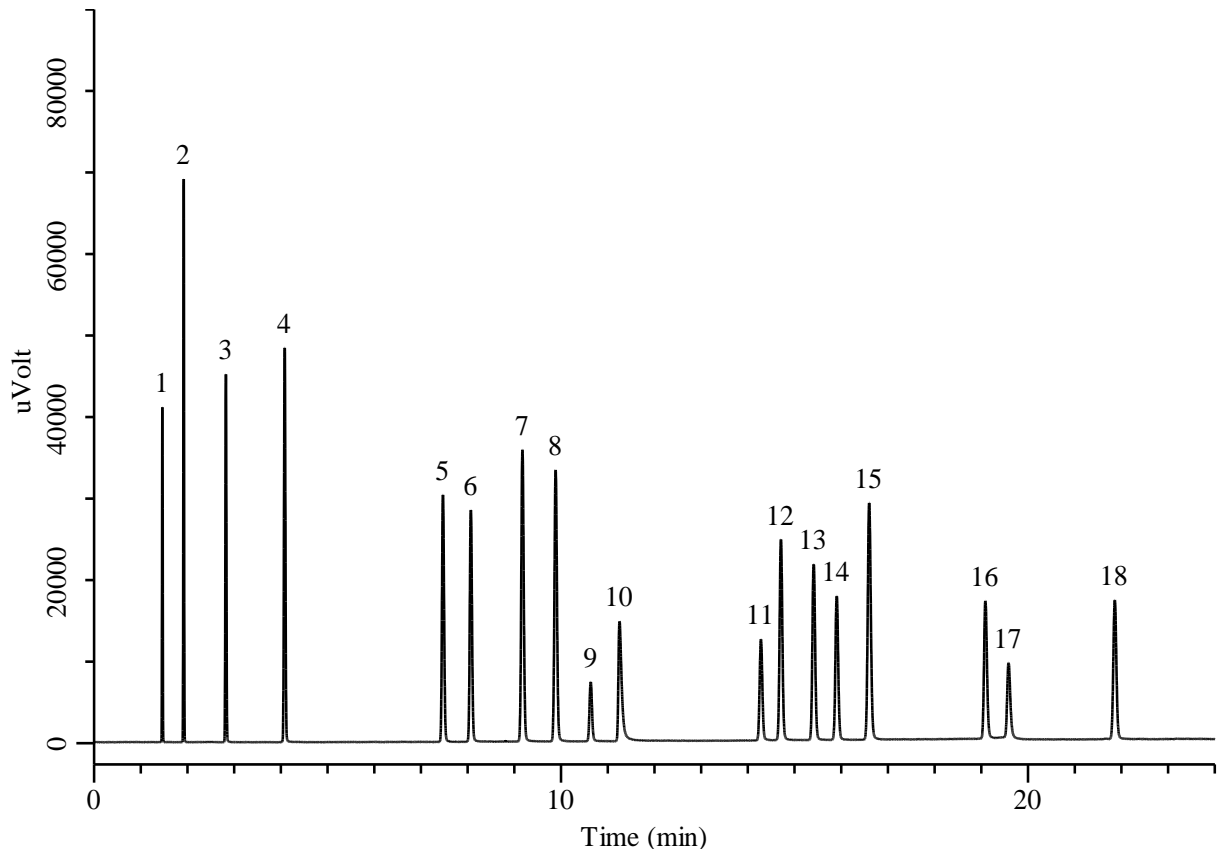


Hydrocarbons C1-C5



Conditions

System : GC/FID
Column : TC-BOND Alumina/Na₂SO₄
 0.53 mm I.D. x 30 m df = 10 μm
Col. Cat. No. : 1010-40343
Col. Temp. : 40 °C - 5 °C/min - 200 °C
Carrier Gas : He 30 kPa
Injection : Split flow 50 mL/min
 200 °C
Detection : FID Range 10⁰
 200 °C
Sample Size : 100 ppm Vol/Vol in He
 200 μL

Analyte

1. Methane	10. Acetylene
2. Ethane	11. <i>trans</i> -2-Butene
3. Ethylene	12. 1-Butene
4. Propane	13. Isobutene
5. Cyclopropane	14. <i>cis</i> -2-Butene
6. Propylene	15. Isopentane
7. Isobutane	16. 1,3-Butadiene
8. <i>n</i> -Butane	17. Methyl acetylene
9. Propadiene	18. 2-Methyl-1-butene