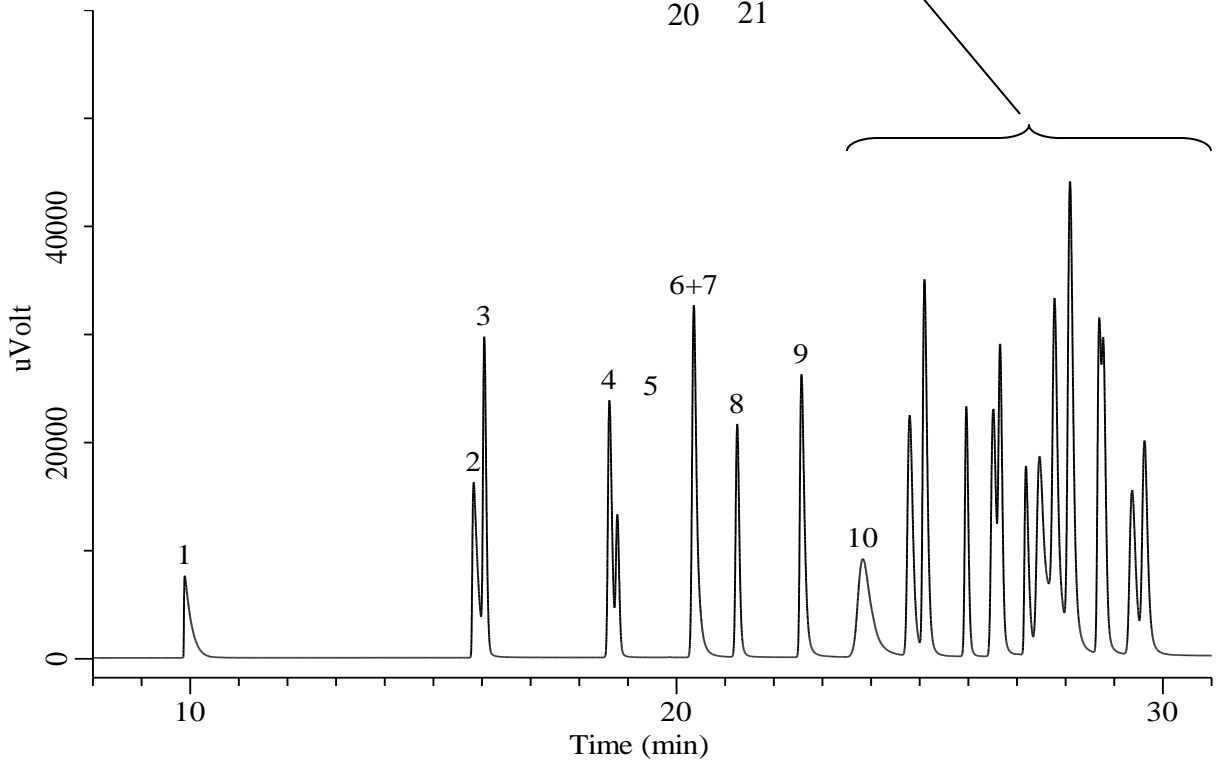
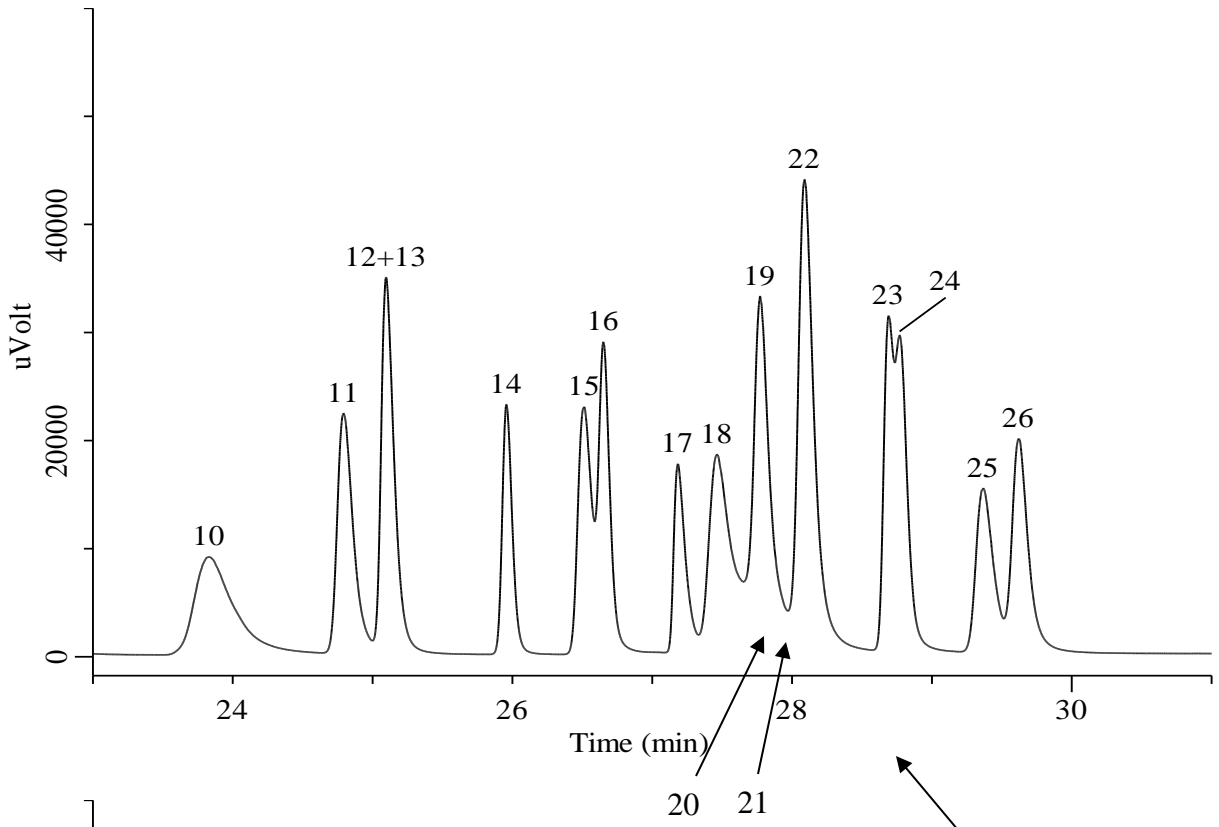


Organic Solvents



Organic Solvents

Conditions

System	: GC/FID
Column	: TC-BOND Q 0.53 mm I.D. x 30 m df = 20 µm
Col. Cat. No.	: 1010-40243
Col. Temp.	: 40 °C - 5 °C/min - 250 °C
Carrier Gas	: He 30 kPa
Injection	: Split flow 150 mL/min 250 °C
Detection	: FID Range 10 ¹ 250 °C
Sample Size	: Mixed evenly 0.2 µL

Analyte

- | | |
|----------------------------------|---|
| 1. Methanol | 14. Ethyl acetate |
| 2. Ethanol | 15. 2-Butanol |
| 3. Acetonitrile | 16. 1,2-Dichloroethane |
| 4. Acetone | 17. Methyl cellosolve |
| 5. Dichloromethane | 18. 2-Methyl-1-propanol(Isobutyl alcohol) |
| 6. 2-Propanol(Isopropyl alcohol) | 19. <i>n</i> -Hexane |
| 7. Methyl acetate | 20. 1,1,1-Trichloroethane |
| 8. Ethyl ether | 21. Carbon tetrachloride |
| 9. 1-Propanol | 22. Benzene |
| 10. <i>tert</i> -Butanol | 23. 1-Butanol |
| 11. Tetrahydrofuran | 24. Trichloroethylene |
| 12. Methyl ethyl ketone(MEK) | 25. 1,4-Dioxane |
| 13. Chloroform | 26. Isopropyl acetate |