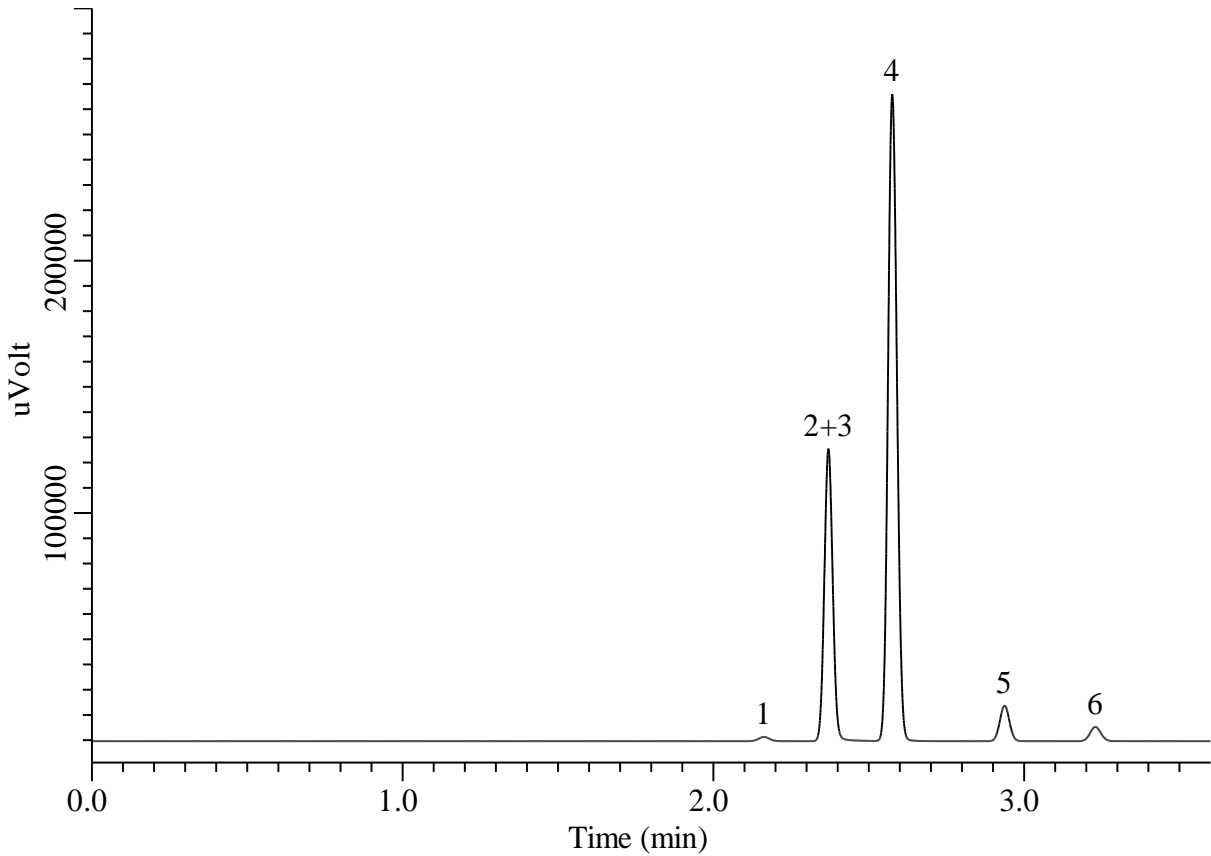


## Inorganic gases



### Conditions

**System** : GC/HID  
**Column** : TC-Molsieve 5A  
 0.53 mm I.D. x 30 m df = 50 µm  
**Col. Cat. No.** : 1010-40543  
**Col. Temp.** : 150 °C  
**Carrier Gas** : He 40 kPa  
**Injection** : Split flow 50 mL/min  
 160 °C  
**Detection** : HID  
 160 °C  
**Sample Size** : 200 µL

### Analyte

1. Hydrogen(H<sub>2</sub>)  
 2. Argon(Ar)  
 3. Oxygen(O<sub>2</sub>)  
 4. Nitrogen(N<sub>2</sub>)  
 5. Methane  
 6. Carbon monoxide(CO)