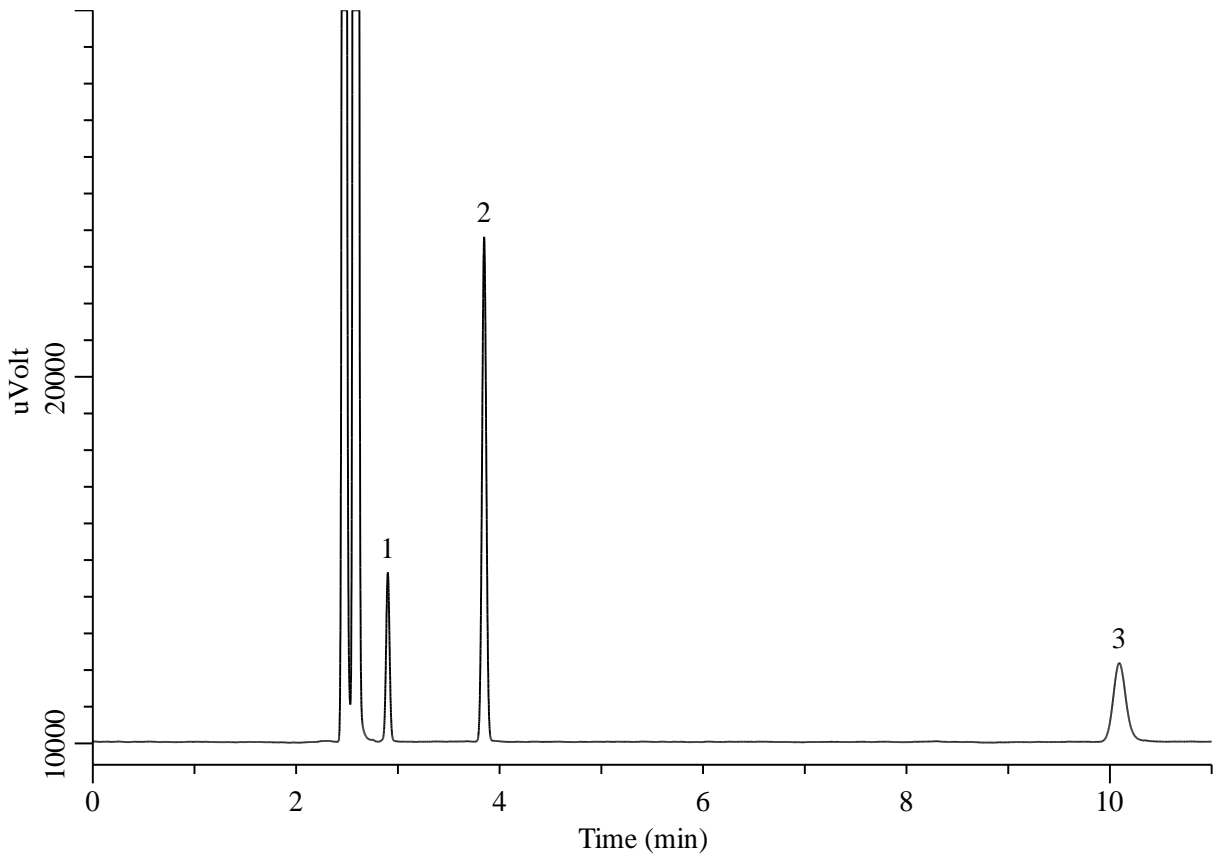


Inorganic gases



Conditions

System : GC/HID
Column : TC-Molsieve 5A
 0.53 mm I.D. x 30 m df = 50 µm
Col. Cat. No. : 1010-40543
Col. Temp. : 200 °C
Carrier Gas : He 40 kPa
Injection : Split flow 50 mL/min
 160 °C
Detection : HID
 160 °C
Sample Size : 500 ppm Vol/Vol in He
 200 µL

Analyte

1. Carbon monoxide(CO)
 2. Xenon(Xe)
 3. Nitrous oxide(N₂O)